

Recombinant Human PAP protein (His tag)

Catalog Number:PDEH100175



Note: Centrifuge before opening to ensure complete recovery of vial contents.

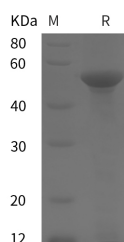
Description

Synonyms	PAP;PDGFA-Associated Protein 1;PAP1;PDAP1;HASPP28
Species	Human
Expression Host	E.coli
Sequence	Asn 40-Lys 491
Accession	P08697
Calculated Molecular Weight	49.6 kDa
Observed molecular weight	50 kDa
Tag	N-His

Properties

Purity	> 95 % as determined by reducing SDS-PAGE.
Endotoxin	Please contact us for more information.
Storage	Generally, lyophilized proteins are stable for up to 12 months when stored at -20 to -80°C. Reconstituted protein solution can be stored at 4-8°C for 2-7 days. Aliquots of reconstituted samples are stable at < -20°C for 3 months.
Shipping	This product is provided as lyophilized powder which is shipped with ice packs.
Formulation	Lyophilized from sterile PBS, pH 7.4. Normally 5 % - 8 % trehalose, mannitol and 0.01 % Tween80 are added as protectants before lyophilization. Please refer to the specific buffer information in the printed manual.
Reconstitution	Please refer to the printed manual for detailed information.

Data



> 95 % as determined by reducing SDS-PAGE.

Background

Human PAP, also known as 28 kDa heat- and acid-stable phosphoprotein, PDGF-associated protein, PDGFA-associated protein 1, PDAP1, HASPP28, is a protein which belongs to the PDAP1 family. The encoded protein in rodents has been shown to bind PDGFA with a low affinity. PDGF-Associated Protein (PAP) is a phosphoprotein that may enhance PDGFA-stimulated cell growth in fibroblasts, but inhibits the mitogenic effect of PDGFB. PDAP1 expression is induced by TNF-alpha, and cells overexpressing PDAP1 show significantly less apoptosis on exposure to TNF-alpha.

For Research Use Only

A Reliable Research Partner in Life Science and Medicine

Toll-free: 1-888-852-8623

Web: www.elabscience.com

Tel: 1-832-243-6086

Email: techsupport@elabscience.com

Fax: 1-832-243-6017