

## 14-3-3 eta/YWHAH Monoclonal Antibody

catalog number: **AN200073P**

**Note:** Centrifuge before opening to ensure complete recovery of vial contents.

### Description

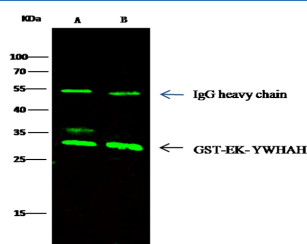
<b>Reactivity</b>	Human
<b>Immunogen</b>	Recombinant Human 14-3-3 eta / YWHAH protein
<b>Host</b>	Mouse
<b>Isotype</b>	IgG1
<b>Clone</b>	4B7
<b>Purification</b>	Protein A
<b>Buffer</b>	0.2 µm filtered solution in PBS

### Applications

### Recommended Dilution

<b>WB</b>	1:500-1:2000
<b>IP</b>	1-4 µL/mg of lysate

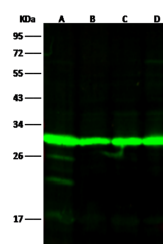
### Data



Immunoprecipitation analysis using 2 µL anti-YWHAH mouse Monoclonal Antibody and 15 µl of 50 % Protein G agarose. Western blot was performed from the immunoprecipitate using YWHAH mouse Monoclonal Antibody at a dilution of 1:500. Lane A: 0.5 mg Jurkat Whole Cell Lysate, Lane B: 0.5 mg k562 Whole Cell Lysate

**Observed-MW:30 kDa**

**Calculated-MW:28 kDa**



Western Blot with 14-3-3 eta / YWHAH Monoclonal Antibody at dilution of 1:500. Lane A: U937 Whole Cell Lysate, Lane B: 293T Whole Cell Lysate, Lane C: Jurkat Whole Cell Lysate, Lane D: K562 Whole Cell Lysate, Lysates/proteins at 30 µg per lane.

**Observed-MW:30 kDa**

**Calculated-MW:28 kDa**

### Preparation & Storage

<b>Storage</b>	This antibody can be stored at 2°C-8°C for one month without detectable loss of activity. Antibody products are stable for twelve months from date of receipt when stored at -20°C to -80°C. Preservative-Free. Avoid repeated freeze-thaw cycles.
<b>Shipping</b>	Ice bag

### Background

This gene product belongs to the 14-3-3 family of proteins which mediate signal transduction by binding to phosphoserine-containing proteins. This highly conserved protein family is found in both plants and mammals, and this protein is 99% identical to the mouse, rat and bovine orthologs. This gene contains a 7 bp repeat sequence in its 2' UTR, and changes in the number of this repeat have been associated with early-onset schizophrenia and psychotic bipolar disorder.

### For Research Use Only