

CAMKK1 Polyclonal Antibody

Catalog Number: E-AB-52514



Note: Centrifuge before opening to ensure complete recovery of vial contents.

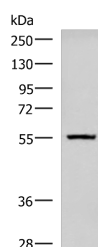
Description

Reactivity	Human, Mouse, Rat
Immunogen	Fusion protein of human CAMKK1
Host	Rabbit
Isotype	IgG
Purification	Antigen affinity purification
Conjugation	Unconjugated
Formulation	PBS with 0.05% NaN3 and 40% Glycerol, pH7.4

Applications Recommended Dilution

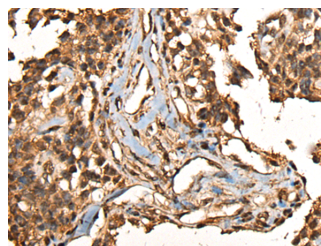
WB	1:500-1:2000
IHC	1:30-1:150
ELISA	1:500-1000

Data

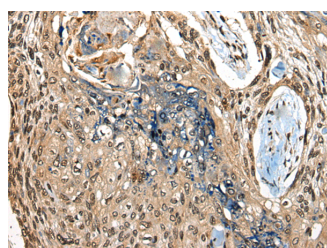


Western blot analysis of Human cerebella tissue lysate using CAMKK1 Polyclonal Antibody at dilution of 1:700

Observed Mw: Refer to figures
Calculated Mw: 56 kDa



Immunohistochemistry of paraffin-embedded Human ovarian cancer tissue using CAMKK1 Polyclonal Antibody at dilution of 1:35 (x200)



Immunohistochemistry of paraffin-embedded Human esophagus cancer tissue using CAMKK1 Polyclonal Antibody at dilution of 1:35 (x200)

Preparation & Storage

Storage Store at -20°C. Avoid freeze / thaw cycles.

Background

For Research Use Only

A Reliable Research Partner in Life Science and Medicine

Toll-free: 1-888-852-8623

Web: www.elabscience.com

Tel: 1-832-243-6086

Email: techsupport@elabscience.com

Fax: 1-832-243-6017

CAMKK1 Polyclonal Antibody

Catalog Number: E-AB-52514



The product of this gene belongs to the Serine/Threonine protein kinase family, and to the Ca(2+)/calmodulin-dependent protein kinase subfamily. This protein plays a role in the calcium/calmodulin-dependent (CaM) kinase cascade. Three transcript variants encoding two distinct isoforms have been identified for this gene.

For Research Use Only

A Reliable Research Partner in Life Science and Medicine

Toll-free: 1-888-852-8623

Tel: 1-832-243-6086

Fax: 1-832-243-6017

Web: www.elabscience.com

Email: techsupport@elabscience.com