

Recombinant Human Ribonuclease K6/RNASE6 Protein (His Tag)

Catalog Number:PKSH033003

Note: Centrifuge before opening to ensure complete recovery of vial contents.

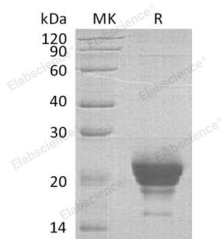
Description

Synonyms	Ribonuclease K6;RNase K6;RNASE6;RNS6
Species	Human
Expression Host	HEK293 Cells
Sequence	Trp24-Leu150
Accession	Q93091
Calculated Molecular Weight	15.7 kDa
Observed molecular weight	18-25 kDa
Tag	C-His

Properties

Purity	> 95 % as determined by reducing SDS-PAGE.
Endotoxin	< 1.0 EU per µg of the protein as determined by the LAL method.
Storage	Store at < -20°C, stable for 6 months. Please minimize freeze-thaw cycles.
Shipping	This product is provided as liquid. It is shipped at frozen temperature with blue ice/gel packs. Upon receipt, store it immediately at < - 20°C.
Formulation	Supplied as a 0.2 µm filtered solution of 20mM Tris-HCl, 150mM NaCl, 1mM DTT, 10% Glycerol, pH 7.5.
Reconstitution	Not Applicable

Data



> 95 % as determined by reducing SDS-PAGE.

Background

Ribonuclease K6 (RNASE6) is a secreted protein that belongs to the pancreatic ribonuclease family. Human RNASE6 is synthesized as a 150 amino acid precursor that contains a 23 amino acid signal sequence, and a 127 amino acid mature chain. RNASE6 is expressed in many tissues, with high expression levels in the lung, with lower expression levels in the heart, placenta, kidney, pancreas, liver, brain, and skeletal muscle. It is also detected in monocytes and neutrophils. RNASE6 may have a role in host defense.

For Research Use Only

A Reliable Research Partner in Life Science and Medicine

Toll-free: 1-888-852-8623

Web: www.elabscience.com

Tel: 1-832-243-6086

Email: techsupport@elabscience.com

Fax: 1-832-243-6017