

Recombinant FSTL1 Monoclonal Antibody

catalog number: **AN300210P**

Note: Centrifuge before opening to ensure complete recovery of vial contents.

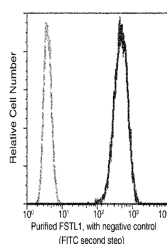
Description

Reactivity	Human
Immunogen	Recombinant Human FSTL1 protein
Host	Rabbit
Isotype	IgG
Clone	9C7
Purification	Protein A
Buffer	0.2 µm filtered solution in PBS

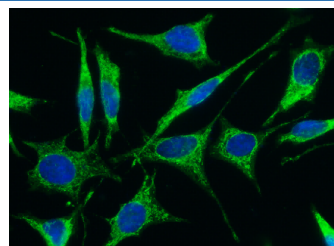
Applications

Applications	Recommended Dilution
ICC/IF	1:20-1:100
FCM	1:25-1:100

Data



Flow cytometric analysis of Human FSTL1 expression on HeLa cells. The cells were stained with purified anti-Human FSTL1, then a FITC-conjugated second step antibody. The fluorescence histograms were derived from gated events with the forward and side light-scatter characteristics of intact cells.



Immunofluorescence analysis of Human FSTL1 in HeLa cells. Cells were fixed with 4% PFA, permeabilized with 0.3% Triton X-100 in PBS, blocked with 10% serum, and incubated with rabbit anti-Human FSTL1 Monoclonal Antibody (1:60) at 37°C 1 hour. Then cells were stained with the Alexa Fluor® 488-conjugated goat Anti-rabbit IgG secondary antibody (green), counterstained with DAPI for nuclear staining (blue). Positive staining was localized to cytoplasm.

Preparation & Storage

Storage	This antibody can be stored at 2°C-8°C for one month without detectable loss of activity. Antibody products are stable for twelve months from date of receipt when stored at -20°C to -80°C. Preservative-Free. Avoid repeated freeze-thaw cycles.
Shipping	Ice bag

Background

This gene encodes a protein with similarity to follistatin, an activin-binding protein. It contains an FS module, a follistatin-like sequence containing 7 conserved cysteine residues. This gene product is thought to be an autoantigen associated with rheumatoid arthritis.

For Research Use Only