

# GNAT1 Polyclonal Antibody

Catalog Number: E-AB-18009



**Note:** Centrifuge before opening to ensure complete recovery of vial contents.

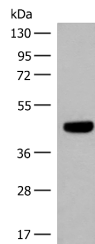
## Description

<b>Reactivity</b>	Human, Mouse
<b>Immunogen</b>	Synthetic peptide of human GNAT1
<b>Host</b>	Rabbit
<b>Isotype</b>	IgG
<b>Purification</b>	Antigen affinity purification
<b>Conjugation</b>	Unconjugated
<b>Formulation</b>	PBS with 0.05% NaN <sub>3</sub> and 40% Glycerol, pH7.4

## Applications Recommended Dilution

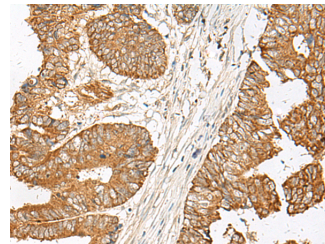
<b>WB</b>	1:500-1:2000
<b>IHC</b>	1:30-1:150
<b>ELISA</b>	1:5000-1:10000

## Data



Western blot analysis of HT29 cell lysate using GNAT1 Polyclonal Antibody at dilution of 1:250

**Observed MW: Refer to figures**  
**Calculated Mw: 40 kDa**



Immunohistochemistry of paraffin-embedded Human colorectal cancer tissue using GNAT1 Polyclonal Antibody at dilution of 1:25(×200)

## Preparation & Storage

**Storage** Store at -20°C. Avoid freeze / thaw cycles.

## Background

Transducin is a 3-subunit guanine nucleotide-binding protein (G protein) which stimulates the coupling of rhodopsin and cGMP-phosphodiesterase during visual impulses. The transducin alpha subunits in rods and cones are encoded by separate genes. This gene encodes the alpha subunit in rods. This gene is also expressed in other cells, and has been implicated in bitter taste transduction in rat taste cells. Mutations in this gene result in autosomal dominant congenital stationary night blindness. Multiple alternatively spliced variants, encoding the same protein, have been identified. GNAT1 (G Protein Subunit Alpha Transducin 1) is a Protein Coding gene. Diseases associated with GNAT1 include Night Blindness, Congenital Stationary, Autosomal Dominant 3 and Night Blindness, Congenital Stationary, Type 1G. Among its related pathways are Phospholipase-C Pathway and Phototransduction. GO annotations related to this gene include GTP binding and GTPase activity. An important paralog of this gene is GNAT2.

## For Research Use Only

A Reliable Research Partner in Life Science and Medicine

Toll-free: 1-888-852-8623

Web: [www.elabscience.com](http://www.elabscience.com)

Tel: 1-832-243-6086

Email: [techsupport@elabscience.com](mailto:techsupport@elabscience.com)

Fax: 1-832-243-6017