

Recombinant Swine CXCL11 protein(His Tag)

Catalog Number: PKSS000022

Note: *Centrifuge before opening to ensure complete recovery of vial contents.*

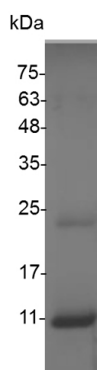
Description

Species	Porcine
Source	E.coli-derived Porcine CXCL11 protein Phe 22-Val 100, with an N-terminal His
Calculated MW	9.7 kDa
Observed MW	11 kDa
Accession	NP_001121963.1
Bio-activity	Not validated for activity

Properties

Purity	> 98 % as determined by reducing SDS-PAGE.
Endotoxin	< 0.1 EU per µg of the protein as determined by the LAL method.
Storage	Generally, lyophilized proteins are stable for up to 12 months when stored at -20 to -80°C. Reconstituted protein solution can be stored at 4-8°C for 2-7 days. Aliquots of reconstituted samples are stable at < -20°C for 3 months.
Shipping	This product is provided as lyophilized powder which is shipped with ice packs.
Formulation	Lyophilized from sterile PBS, pH 7.4. Normally 5% - 8% trehalose, mannitol and 0.01% Tween 80 are added as protectants before lyophilization.
Reconstitution	Please refer to the specific buffer information in the printed manual. Please refer to the printed manual for detailed information.

Data



> 98 % as determined by reducing SDS-PAGE.

Background

CXCL11, also known as I-TAC, SCYB9B, H174 and beta -R1, is a non-ELR CXC chemokine. CXCL11 cDNA encodes a 94 amino acid (aa) residue precursor protein with a 21 aa residue putative signal sequence, which is cleaved to form the mature 73 aa residue protein. CXCL11 shares 36% and 37% amino acid sequence homology with IP-10 and MIG (two other known human non-ELR CXC chemokines), respectively. CXCL11 is expressed at low levels in normal tissues including thymus, spleen and pancreas. The expression of CXCL11 mRNA is radically up regulated in IFN-gamma and IL-1 stimulated astrocytes. Moderate increase in expression is also observed in stimulated monocytes. CXCL11 has potent chemoattractant activity for IL-2 activated T cells and transfected cell lines expressing CXCR3, but not freshly isolated T cells, neutrophils or monocytes. The gene encoding CXCL11 has been mapped to chromosome 4.

For Research Use Only

Toll-free: 1-888-852-8623
Web: www.elabscience.com

Tel: 1-832-243-6086
Email: techsupport@elabscience.com

Fax: 1-832-243-6017