

Recombinant Human IGF1R/CD221/IGF-I R protein (His tag)



Catalog Number:PDEH100291

Note: Centrifuge before opening to ensure complete recovery of vial contents.

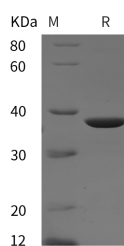
Description

Synonyms	CD221 antigen;CD221;IGF1R;IGF-1R;IGF-I R;IGF-I receptor;IGFIR;IGF-IR;IGFR;insulin-like growth factor 1 receptor;JTK13
Species	Human
Expression Host	E.coli
Sequence	Asp 741-Asn 1036
Accession	P08069
Calculated Molecular Weight	32.5 kDa
Observed molecular weight	38 kDa
Tag	N-His

Properties

Purity	> 95 % as determined by reducing SDS-PAGE.
Endotoxin	Please contact us for more information.
Storage	Generally, lyophilized proteins are stable for up to 12 months when stored at -20 to -80°C. Reconstituted protein solution can be stored at 4-8°C for 2-7 days. Aliquots of reconstituted samples are stable at < -20°C for 3 months.
Shipping	This product is provided as lyophilized powder which is shipped with ice packs.
Formulation	Lyophilized from sterile PBS, pH 7.4. Normally 5 % - 8 % trehalose, mannitol and 0.01 % Tween80 are added as protectants before lyophilization. Please refer to the specific buffer information in the printed manual.
Reconstitution	Please refer to the printed manual for detailed information.

Data



> 95 % as determined by reducing SDS-PAGE.

Background

The insulin-like growth factor-1 receptor (IGF1R) is a transmembrane tyrosine kinase involved in several biological processes including cell proliferation, differentiation, DNA repair, and cell survival. This is a disulfide-linked heterotetrameric transmembrane protein consisting of two α and two β subunits, and among which, the α subunit is extracellular while the β subunit has an extracellular domain, a transmembrane domain and a cytoplasmic tyrosine kinase domain. The IGF-I receptor is highly expressed in all cell types and tissues. Essentially all of the biological activities of IGF-I and II have been shown to be mediated via IGF-I R. IGF1R is an important signaling molecule in cancer cells and plays an essential role in the establishment and maintenance of the transformed phenotype. Inhibition of IGF1R signaling

For Research Use Only

A Reliable Research Partner in Life Science and Medicine

Toll-free: 1-888-852-8623

Web: www.elabscience.com

Tel: 1-832-243-6086

Email: techsupport@elabscience.com

Fax: 1-832-243-6017

Recombinant Human IGF1R/CD221/IGF-I R protein (His tag)



Catalog Number:PDEH100291

thus appears to be a promising strategy to interfere with the growth and survival of cancer cells, is now an attractive anti-cancer treatment target.

For Research Use Only

A Reliable Research Partner in Life Science and Medicine

Toll-free: 1-888-852-8623

Tel: 1-832-243-6086

Fax: 1-832-243-6017

Web: www.elabscience.com

Email: techsupport@elabscience.com