

## Recombinant Human Secretogranin-2/SCG2 Protein (His Tag)

Catalog Number: PKSH033013

**Note:** Centrifuge before opening to ensure complete recovery of vial contents.

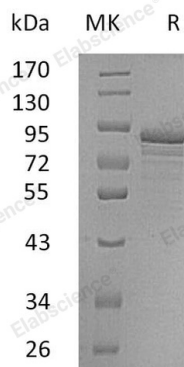
### Description

<b>Species</b>	Human
<b>Source</b>	HEK293 Cells-derived Human Secretogranin-2;SCG2 protein Ser29-Met617, with an C-terminal His
<b>Calculated MW</b>	68.9 kDa
<b>Observed MW</b>	85-95 kDa
<b>Accession</b>	AAH22509.1
<b>Bio-activity</b>	Not validated for activity

### Properties

<b>Purity</b>	> 90 % as determined by reducing SDS-PAGE.
<b>Endotoxin</b>	< 1.0 EU per µg of the protein as determined by the LAL method.
<b>Storage</b>	Generally, lyophilized proteins are stable for up to 12 months when stored at -20 to -80°C. Reconstituted protein solution can be stored at 4-8°C for 2-7 days. Aliquots of reconstituted samples are stable at < -20°C for 3 months.
<b>Shipping</b>	This product is provided as lyophilized powder which is shipped with ice packs.
<b>Formulation</b>	Lyophilized from a 0.2 µm filtered solution of 20mM PB, 150mM NaCl, pH 7.4. Normally 5% - 8% trehalose, mannitol and 0.01% Tween 80 are added as protectants before lyophilization.
	Please refer to the specific buffer information in the printed manual.
<b>Reconstitution</b>	Please refer to the printed manual for detailed information.

### Data



> 90 % as determined by reducing SDS-PAGE.

### Background

Secretogranin-2 is also known as Chromogranin-C, Secretogranin II, SgII. In humans, it is encoded by the SCG2 gene. It belongs to the chromogranin/secretogranin protein family. Secretogranin-2 is a neuroendocrine secretory granule protein, which is the precursor for biologically active peptides. It derived secretoneurin was distributed with strong immunoreactivity in the somata of pelvic ganglion neurons, 72% of which also contained tyrosine hydroxylase, as well as in nerve terminals in the muscular layer and the lamina propria of the vas deferens.

### For Research Use Only

Toll-free: 1-888-852-8623  
Web: [www.elabscience.com](http://www.elabscience.com)

Tel: 1-832-243-6086  
Email: [techsupport@elabscience.com](mailto:techsupport@elabscience.com)

Fax: 1-832-243-6017