

LGALSL Polyclonal Antibody

catalog number: E-AB-18059

Note: Centrifuge before opening to ensure complete recovery of vial contents.

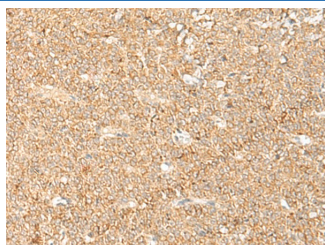
Description

| | |
|---------------------|--|
| Reactivity | Human;Mouse |
| Immunogen | Synthetic peptide of human LGALSL |
| Host | Rabbit |
| Isotype | IgG |
| Purification | Antigen affinity purification |
| Buffer | Phosphate buffered solution, pH 7.4, containing 0.05% stabilizer and 50% glycerol. |

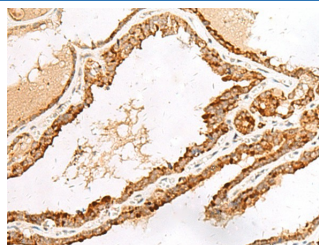
Applications Recommended Dilution

| | |
|------------|------------|
| IHC | 1:50-1:300 |
|------------|------------|

Data



Immunohistochemistry of paraffin-embedded Human ovarian cancer tissue using LGALSL Polyclonal Antibody at dilution of 1:70 (x200)



Immunohistochemistry of paraffin-embedded Human thyroid cancer tissue using LGALSL Polyclonal Antibody at dilution of 1:70 (x200)

Preparation & Storage

| | |
|-----------------|--|
| Storage | Store at -20°C Valid for 12 months. Avoid freeze / thaw cycles. |
| Shipping | The product is shipped with ice pack, upon receipt, store it immediately at the temperature recommended. |

Background

Does not bind lactose, and may not bind carbohydrates.

For Research Use Only