

# FAM50A Polyclonal Antibody

catalog number: E-AB-17943

**Note:** Centrifuge before opening to ensure complete recovery of vial contents.

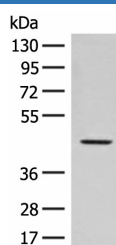
## Description

<b>Reactivity</b>	Human;Mouse
<b>Immunogen</b>	Synthetic peptide of human FAM50A
<b>Host</b>	Rabbit
<b>Isotype</b>	IgG
<b>Purification</b>	Antigen affinity purification
<b>Conjugation</b>	Unconjugated
<b>buffer</b>	Phosphate buffered solution, pH 7.4, containing 0.05% stabilizer and 50% glycerol.

## Applications

Applications	Recommended Dilution
<b>WB</b>	1:500-1:2000
<b>IHC</b>	1:40-1:200

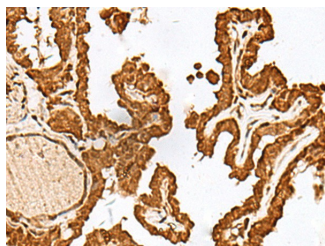
## Data



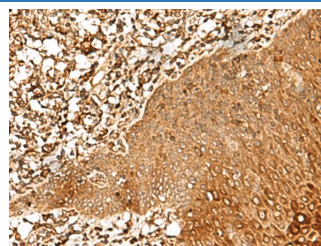
Western blot analysis of Hela cell lysate using FAM50A Polyclonal Antibody at dilution of 1:300

**Observed-MV:Refer to figures**

**Calculated-MV:40 kDa**



Immunohistochemistry of paraffin-embedded Human thyroid cancer tissue using FAM50A Polyclonal Antibody at dilution of 1:25( $\times 200$ )



Immunohistochemistry of paraffin-embedded Human esophagus cancer tissue using FAM50A Polyclonal Antibody at dilution of 1:25( $\times 200$ )

## Preparation & Storage

<b>Storage</b>	Store at $-20^{\circ}\text{C}$ Valid for 12 months. Avoid freeze / thaw cycles.
<b>Shipping</b>	The product is shipped with ice pack,upon receipt,store it immediately at the temperature recommended.

## Background

This gene belongs to the FAM50 family. The encoded protein is highly conserved in length and sequence across different species. It is a basic protein containing a nuclear localization signal, and may function as a DNA-binding protein or a transcriptional factor.

## For Research Use Only