

Elab Fluor® 488-conjugated GFP Tag Monoclonal Antibody

catalog number: AN00432L

Note: Centrifuge before opening to ensure complete recovery of vial contents.

Description

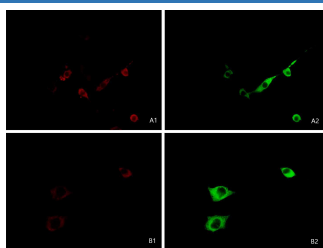
Reactivity	All
Immunogen	GFP tag fusion protein
Host	Mouse
Isotype	IgG2a
Clone	7C4
Purification	Protein A/G Purification
Conjugation	Elab Fluor® 488(Ex/Em:493 nm/519 nm)
Buffer	PBS with 0.05% Proclin300, 1% protective protein and 50% glycerol, pH7.4

Applications

Recommended Dilution

IF	1:500-1:2000
-----------	--------------

Data



Immunofluorescent analysis of 3T3-L1 cells transfected with a GFP-tag (green) using Elab Fluor® 594-conjugated GFP Tag Monoclonal Antibody (red) or Elab Fluor® 488-conjugated GFP Tag Monoclonal Antibody (green) at dilution of 1:2000. A1, A2: the primary antibody is GFP-594, the cells are 3T3-L1 A1: GFP-594 excitation, A2: 488 excitation (GFP autofluorescence) B1, B2: the primary antibody is GFP-594 and GFP-488, the cells are 3T3-L1 B1: GFP-594 excitation, B2: GFP-488 excitation

Preparation & Storage

Storage	Store at -20°C Valid for 12 months. Avoid freeze / thaw cycles. Protected from prolonged exposure to light.
Shipping	The product is shipped with ice pack, upon receipt, store it immediately at the temperature recommended.

Background

The green fluorescent protein (GFP) is a protein that exhibits bright green fluorescence when exposed to light in the blue to ultraviolet range. It is first isolated from the jellyfish *Aequorea victoria* and is frequently used as a reporter of expression. GFP is widely used in gene expression, tracing and protein subcellular localization.