

AF/LE Purified Anti-Human CD3 Antibody[OKT-3]

Catalog Number: GF10010

Note: Centrifuge before opening to ensure complete recovery of vial contents.

Description

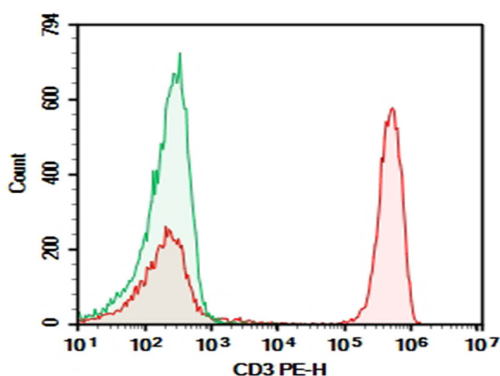
| | |
|---------------------|---|
| Reactivity | Human |
| Immunogen | Recombinant Human CD3 protein |
| Host | Mouse |
| Isotype | Mouse IgG2a, κ |
| Clone | OKT-3 |
| Purification | >98%, Protein A/G purified |
| Conjugation | None (AF/LE) |
| Buffer | Sterile PBS, pH 7.2. < 1.0 EU per mg of the antibody as determined by the LAL method. |

Applications

Recommended Dilution

| | |
|------------|--|
| FCM | 2 µg/mL (0.5×10 ⁶ -1×10 ⁶ cells) |
|------------|--|

Data



Human peripheral blood lymphocytes were stained with 0.2 µg AF/LE Purified Anti-Human CD3 Antibody[OKT-3] (Right) and 0.2 µg Mouse IgG2a, κ Isotype Control (Left), followed by PE-conjugated Goat Anti-Mouse IgG Secondary Antibody.

Preparation & Storage

| | |
|-----------------|--|
| Storage | Store at 4°C valid for 12 months or -20°C valid for long term storage, avoid freeze / thaw cycles. This preparation contains no preservatives, thus it should be handled under aseptic conditions. |
| Shipping | Ice bag |

Background

CD3ε is a 20 kD chain of the CD3/T cell receptor (TCR) complex, which is composed of two CD3ε, one CD3γ, one CD3δ, one CD3ζ (CD247), and a T cell receptor (α/β or γ/δ) heterodimer. It is found on all mature T lymphocytes, NK T cells, and some thymocytes. CD3, also known as T3, is a member of the immunoglobulin superfamily that plays a role in antigen recognition, signal transduction, and T cell activation.