

## APOD Polyclonal Antibody

catalog number: **E-AB-17730**

**Note:** Centrifuge before opening to ensure complete recovery of vial contents.

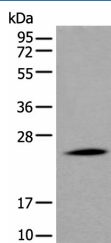
### Description

<b>Reactivity</b>	Human
<b>Immunogen</b>	Synthetic peptide of human APOD
<b>Host</b>	Rabbit
<b>Isotype</b>	IgG
<b>Purification</b>	Antigen affinity purification
<b>Buffer</b>	Phosphate buffered solution, pH 7.4, containing 0.05% stabilizer and 50% glycerol.

### Applications

Applications	Recommended Dilution
<b>WB</b>	1:500-1:2000
<b>IHC</b>	1:40-1:200

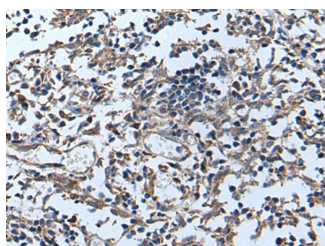
### Data



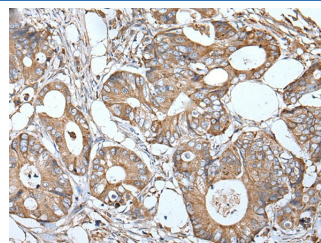
Western blot analysis of Human liver tissue lysate using APOD Polyclonal Antibody at dilution of 1:550

**Observed-MW: Refer to figures**

**Calculated-MW: 21 kDa**



Immunohistochemistry of paraffin-embedded Human tonsil tissue using APOD Polyclonal Antibody at dilution of 1:55 (×200)



Immunohistochemistry of paraffin-embedded Human colorectal cancer tissue using APOD Polyclonal Antibody at dilution of 1:55 (×200)

### Preparation & Storage

<b>Storage</b>	Store at -20°C Valid for 12 months. Avoid freeze / thaw cycles.
<b>Shipping</b>	The product is shipped with ice pack, upon receipt, store it immediately at the temperature recommended.

### Background

Apolipoprotein D (ApoD) is a member of the lipocalin superfamily of ligand transporters, and has been implicated in the transport of small hydrophobic molecules. ApoD is also a component of plasma high-density lipoproteins (HDL). Alteration of ApoD expression has been linked to multiple neurological disorders, including Alzheimer's disease.

### For Research Use Only