

CPLX3 Polyclonal Antibody

catalog number: E-AB-53051

Note: Centrifuge before opening to ensure complete recovery of vial contents.

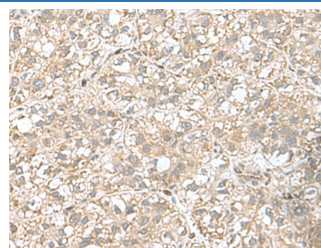
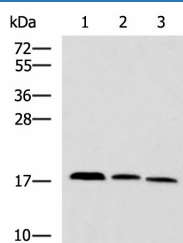
Description

Reactivity	Human;Mouse;Rat
Immunogen	Fusion protein of human CPLX3
Host	Rabbit
Isotype	IgG
Purification	Antigen affinity purification
Conjugation	Unconjugated
buffer	Phosphate buffered solution, pH 7.4, containing 0.05% stabilizer and 50% glycerol.

Applications

Applications	Recommended Dilution
WB	1:1000-1:5000
IHC	1:50-1:200

Data



Western blot analysis of Mouse kidney tissue Rat brain tissue Mouse liver tissue lysates using CPLX3 Polyclonal Antibody at dilution of 1:950

Immunohistochemistry of paraffin-embedded Human liver cancer tissue using CPLX3 Polyclonal Antibody at dilution of 1:65(×200)

Observed-MV:Refer to figures

Calculated-MV:17 kDa

Preparation & Storage

Storage	Store at -20°C Valid for 12 months. Avoid freeze / thaw cycles.
Shipping	The product is shipped with ice pack,upon receipt,store it immediately at the temperature recommended.

Background

Positively regulates a late step in synaptic vesicle exocytosis.

For Research Use Only