

## Recombinant GSK3α Monoclonal Antibody

catalog number: **AN300947L**

**Note:** Centrifuge before opening to ensure complete recovery of vial contents.

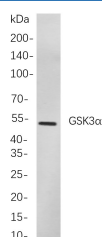
### Description

<b>Reactivity</b>	Human;Mouse;Rat
<b>Immunogen</b>	Recombinant Human GSK3α protein
<b>Host</b>	Rabbit
<b>Isotype</b>	IgG,k
<b>Clone</b>	B894
<b>Purification</b>	Protein A
<b>Buffer</b>	PBS, 50% glycerol, 0.05% Proclin 300, 0.05% protein protectant.

### Applications Recommended Dilution

<b>IHC</b>	1:200-1:1000
<b>WB</b>	1:1000-1:5000
<b>IF</b>	1:200-1:1000
<b>ELISA</b>	1:5000-1:20000
<b>IP</b>	1:50-1:200,

### Data



Western Blot with Recombinant GSK3α Monoclonal Antibody at dilution of 1:1000 dilution. Lane A: K562 cells.

**Observed-MW:51 kDa**

**Calculated-MW:51 kDa**

### Preparation & Storage

<b>Storage</b>	Store at -20°C Valid for 12 months. Avoid freeze / thaw cycles.
<b>Shipping</b>	Ice bag

### Background

GSK3A(glycogen synthase kinase 3 alpha) Homo sapiens This gene encodes a multifunctional Ser/Thr protein kinase that is implicated in the control of several regulatory proteins including glycogen synthase, and transcription factors, such as JUN. It also plays a role in the WNT and PI3K signaling pathways, as well as regulates the production of beta-amyloid peptides associated with Alzheimer's disease.

### For Research Use Only

Toll-free: 1-888-852-8623  
Web: [www.elabscience.com](http://www.elabscience.com)

Tel: 1-832-243-6086  
Email: [techsupport@elabscience.com](mailto:techsupport@elabscience.com)

Fax: 1-832-243-6017

Rev. V1.2