

## Recombinant Human ATG4A Protein (His Tag)

**Catalog Number:** PKSH032099

**Note:** Centrifuge before opening to ensure complete recovery of vial contents.

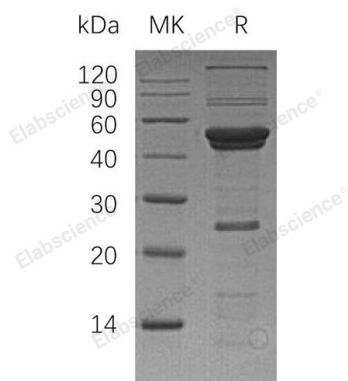
### Description

|                      |   |
|----------------------|---|
| <b>Species</b>       | Human   |
| <b>Source</b>        | E.coli-derived Human ATG4A protein Met 1-Val398, with an N-terminal His |
| <b>Calculated MW</b> | 47.5 kDa  |
| <b>Observed MW</b>   | 40-55 kDa   |
| <b>Accession</b>     | Q8WYN0  |
| <b>Bio-activity</b>  | Not validated for activity  |

### Properties

|                      |   |
|----------------------|---|
| <b>Purity</b>        | > 80 % as determined by reducing SDS-PAGE.  |
| <b>Concentration</b> | Subject to label value.   |
| <b>Endotoxin</b>     | < 1.0 EU per µg of the protein as determined by the LAL method.   |
| <b>Storage</b>       | Store at < -20°C, stable for 6 months. Please minimize freeze-thaw cycles.  |
| <b>Shipping</b>      | This product is provided as liquid. It is shipped at frozen temperature with blue ice/gel packs. Upon receipt, store it immediately at < -20°C. |
| <b>Formulation</b>   | Supplied as a 0.2 µm filtered solution of PBS, pH7.4.   |

### Data



> 80 % as determined by reducing SDS-PAGE.

### Background

Cysteine Protease ATG4A (ATG4A) is a cytoplasmic protein that belongs to the peptidase C54 family. ATG4A is widely expressed in many tissues at a low level, but the highest expression is observed in skeletal muscle and brain. ATG4A is a cysteine protease required for autophagy; it cleaves the C-terminal part of MAP1LC3, GABARAPL2 or GABARAP. ATG4A is inhibited by N-ethylmaleimide. It is suggested that ATG4A has a significant role in suppressing various cancers.