

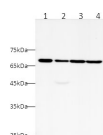
## CK5P3 Polyclonal Antibody

catalog number: D-AB-10307L

**Note:** Centrifuge before opening to ensure complete recovery of vial contents.

| Description  |  |
|--------------|--|
| Reactivity   | Human  |
| Immunogen    | Recombinant Human CK5P3 Protein expressed by E.coli                      |
| Host         | Rabbit   |
| Isotype      | IgG  |
| Purification | Antigen Affinity Purification  |
| Conjugation  | Unconjugated   |
| Buffer       | PBS with 0.05% Proclin300, 1% protective protein and 50% glycerol, pH7.4 |
| Applications | Recommended Dilution   |
| WB           | 1:500-1:1000   |
| IHC          | 1:100-1:400  |

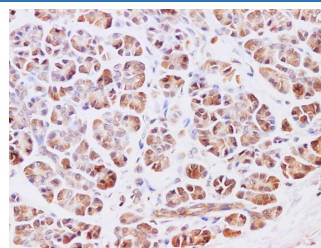
## Data



Western blot with CK5P3 Polyclonal Antibody at dilution of 1:1000. lane 1: Jurkat whole cell lysate, lane 2: HeLa whole cell lysate, lane 3: A431 whole cell lysate, lane 4: HEK-293T whole cell lysate

**Observed-MW: 57 kDa**

**Calculated-MW: 57 kDa**



Immunohistochemistry of paraffin-embedded Human pancreas using CK5P3 Polyclonal Antibody at dilution of 1:200

| Preparation & Storage |  |
|-----------------------|--|
| Storage               | Store at -20°C Valid for 12 months. Avoid freeze / thaw cycles.  |
| Shipping              | The product is shipped with ice pack, upon receipt, store it immediately at the temperature recommended. |

| Background  |  |
|---|--|
| This gene encodes a protein that has been reported to function in signaling pathways governing transcriptional regulation and cell cycle progression. It may play a role in tumorigenesis and metastasis. A pseudogene of this gene is located on the long arm of chromosome 20. Alternative splicing results in multiple transcript variants that encode different isoforms. |  |