

AF/LE Purified Anti-Human CD122 Antibody[TU27]

catalog number: E-AB-F11510

Note: Centrifuge before opening to ensure complete recovery of vial contents.

Description

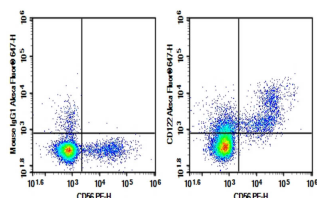
Reactivity	Human
Immunogen	Recombinant Human CD122 protein
Host	Mouse
Isotype	Mouse IgG1, κ
Clone	TU27
Purification	>98%, Protein A/G purified
Conjugation	None (AF/LE)
buffer	Sterile PBS, pH 7.2. < 1.0 EU per mg of the antibody as determined by the LAL method

Applications

Recommended Dilution

FCM	2 $\mu\text{g/mL}$ (1×10^5 - 5×10^5 cells)
------------	---

Data



Human peripheral blood lymphocytes cell were stained with 0.2 μg AF/LE Purified Anti-Human CD122 Antibody[TU27] (Right) and 0.2 μg Mouse IgG1, κ Isotype Control (Left), followed by Alexa Fluor[®] 647-conjugated Goat Anti-Mouse IgG Secondary Antibody, then anti-Human CD56 PE-conjugated Monoclonal Antibody.

Preparation & Storage

Storage	Store at 4°C valid for 12 months or -20°C valid for long term storage, avoid freeze / thaw cycles. This preparation contains no preservatives, thus it should be handled under aseptic conditions.
Shipping	Order now, ship in 3 days

Background

Functional IL-2 receptors can exist in two affinity states on cell surfaces, the high affinity complex consisting of heterotrimers of the alpha, beta, and gamma chains and the intermediate affinity complex comprising heterodimers of the beta and gamma chains. Individual beta chains and alpha chains exhibit low affinity IL-2 binding, and the gamma chain alone does not bind IL-2. In addition to their involvement in IL-2 mediated signal transduction, both the beta chain and gamma chain have been shown to be required for IL-15 mediated signaling. IL-2 R beta is a member of the cytokine receptor superfamily.

For Research Use Only