

Recombinant Human PRADC1/PAP21 Protein (His Tag)

Catalog Number: PKSH032919

Note: Centrifuge before opening to ensure complete recovery of vial contents.

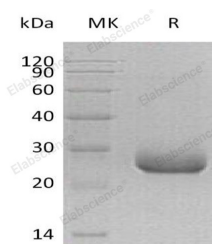
Description

Synonyms	Protease-associated domain-containing protein 1; Protease-associated domain-containing protein of 21 kDa; Hpap21; C2orf7; PAP21; UNQ833/PRO1760
Species	Human
Expression Host	HEK293 Cells
Sequence	His22-Trp188
Accession	Q9BSG0
Calculated Molecular Weight	20.0 kDa
Observed molecular weight	28 kDa
Tag	C-His

Properties

Purity	> 95 % as determined by reducing SDS-PAGE.
Endotoxin	< 1.0 EU per µg of the protein as determined by the LAL method.
Storage	Generally, lyophilized proteins are stable for up to 12 months when stored at -20 to -80°C. Reconstituted protein solution can be stored at 4-8°C for 2-7 days. Aliquots of reconstituted samples are stable at < -20°C for 3 months.
Shipping	This product is provided as lyophilized powder which is shipped with ice packs.
Formulation	Lyophilized from a 0.2 µm filtered solution of 20mM PB, 150mM NaCl, pH7.4. Normally 5 % - 8 % trehalose, mannitol and 0.01% Tween80 are added as protectants before lyophilization. Please refer to the specific buffer information in the printed manual
Reconstitution	Please refer to the printed manual for detailed information.

Data



> 95 % as determined by reducing SDS-PAGE.

Background

PRADC1, also known as C2orf7 or PAP21, is short for Protease-associated domain-containing protein 1. It is a 188 aa. with a 21 aa. signal, and the 171 located Asn can be glycosylated. PRADC1 has two mutations which are N121Q and N171Q. This protein is secreted and highly expressed in skeletal muscle, heart and liver. It is expressed at intermediate level in kidney.

For Research Use Only

A Reliable Research Partner in Life Science and Medicine

Toll-free: 1-888-852-8623

Web: www.elabscience.com

Tel: 1-832-243-6086

Email: techsupport@elabscience.com

Fax: 1-832-243-6017