

# Recombinant Human Kallikrein 13/KLK13 Protein (His Tag)



Catalog Number:PKSH031770

**Note:** Centrifuge before opening to ensure complete recovery of vial contents.

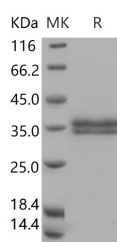
## Description

<b>Synonyms</b>	Kallikrein-13;Kallikrein-Like Protein 4;KLK-L4;KLK13;KLKL4
<b>Species</b>	Human
<b>Expression Host</b>	HEK293 Cells
<b>Sequence</b>	Met 1-Ile 262
<b>Accession</b>	NP_056411.1
<b>Calculated Molecular Weight</b>	28.4 kDa
<b>Tag</b>	C-His
<b>Bioactivity</b>	Measured by its ability to cleave the fluorogenic peptide substrate Boc-VPR-AMC (R&D Systems, Catalog # ES011). The specific activity is > 200 pmoles/min/μg. (Activation description: The proenzyme needs to be activated by Lysyl-Endopeptidase for an activated form)

## Properties

<b>Purity</b>	> 95 % as determined by reducing SDS-PAGE.
<b>Endotoxin</b>	< 1.0 EU per μg of the protein as determined by the LAL method.
<b>Storage</b>	Generally, lyophilized proteins are stable for up to 12 months when stored at -20 to -80°C. Reconstituted protein solution can be stored at 4-8°C for 2-7 days. Aliquots of reconstituted samples are stable at < -20°C for 3 months.
<b>Shipping</b>	This product is provided as lyophilized powder which is shipped with ice packs.
<b>Formulation</b>	Lyophilized from sterile PBS, pH 7.4 Normally 5 % - 8 % trehalose, mannitol and 0.01 % Tween80 are added as protectants before lyophilization. Please refer to the specific buffer information in the printed manual.
<b>Reconstitution</b>	Please refer to the printed manual for detailed information.

## Data



> 95 % as determined by reducing SDS-PAGE.

## Background

Tissue kallikrein 13 (hK13); also known as KLK-L4 (kallikrein-like gene 4); is a member of the human tissue kallikrein family of serine proteases having diverse physiological functions in many tissues. The KLK13 gene resides on chromosome 19q13.3-4 along with other 14 members in a gene cluster and shares a high degree of homology. KLK13 is a trypsin-like; secreted serine protease expressed specifically in the testicular tissue including prostate; salivary gland; breast; and testis. Growing evidence suggests that many kallikreins are implicated in carcinogenesis and may play a role in

## For Research Use Only

A Reliable Research Partner in Life Science and Medicine

Toll-free: 1-888-852-8623

Web: [www.elabscience.com](http://www.elabscience.com)

Tel: 1-832-243-6086

Email: [techsupport@elabscience.com](mailto:techsupport@elabscience.com)

Fax: 1-832-243-6017

# Recombinant Human Kallikrein 13/KLK13 Protein (His Tag)



Catalog Number: PKSH031770

---

metastasis. KLK13 may be involved in the pathogenesis and/or progression of breast and ovary cancers; and is regarded as a novel cancer biomarker. In addition; KLK13 interacts and forms complexes with several serum protease inhibitors; such as alpha2-macroglobulin; and its expression is regulated by steroid hormones.

---

## For Research Use Only

A Reliable Research Partner in Life Science and Medicine

Toll-free: 1-888-852-8623

Tel: 1-832-243-6086

Fax: 1-832-243-6017

Web: [www.elabscience.com](http://www.elabscience.com)

Email: [techsupport@elabscience.com](mailto:techsupport@elabscience.com)