

Recombinant SOD1 Monoclonal Antibody

catalog number: **AN300889L**

Note: Centrifuge before opening to ensure complete recovery of vial contents.

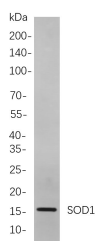
Description

Reactivity	Human;Mouse;Rat
Immunogen	Recombinant Human SOD1 protein
Host	Rabbit
Isotype	IgG, κ
Clone	B836
Purification	Protein A
Buffer	PBS, 50% glycerol, 0.05% Proclin 300, 0.05% protein protectant.

Applications

Applications	Recommended Dilution
IHC	1:100-1:5000
WB	1:2000-1:10000
IF	1:200-1:1000
ELISA	1:5000-1:20000

Data



Western Blot with Recombinant SOD1 Monoclonal Antibody
at dilution of 1:1000 dilution. Lane A: A549 cells.

Observed-MW:15 kDa

Calculated-MW:23 kDa

Preparation & Storage

Storage	Store at -20°C Valid for 12 months. Avoid freeze / thaw cycles.
Shipping	Ice bag

Background

The protein encoded by this gene binds copper and zinc ions and is one of two isozymes responsible for destroying free superoxide radicals in the body. The encoded isozyme is a soluble cytoplasmic protein, acting as a homodimer to convert naturally-occurring but harmful superoxide radicals to molecular oxygen and hydrogen peroxide. The other isozyme is a mitochondrial protein. Mutations in this gene have been implicated as causes of familial amyotrophic lateral sclerosis. Rare transcript variants have been reported for this gene.

For Research Use Only

Toll-free: 1-888-852-8623
Web: www.elabscience.com

Tel: 1-832-243-6086
Email: techsupport@elabscience.com

Fax: 1-832-243-6017

Rev. V1.2