

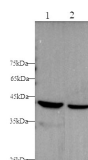
CK-18 Polyclonal Antibody

catalog number: D-AB-10167L

Note: Centrifuge before opening to ensure complete recovery of vial contents.

Description	
Reactivity	Human
Immunogen	Recombinant Human KRT18 protein expressed by E.coli
Host	Rabbit
Isotype	IgG
Purification	Antigen Affinity Purification
Conjugation	Unconjugated
Buffer	PBS with 0.05% Proclin300, 1% protective protein and 50% glycerol, pH7.4
Applications	Recommended Dilution
WB	1:5000-1:10000
IHC	1:500-1:1000

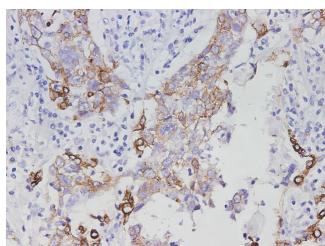
Data



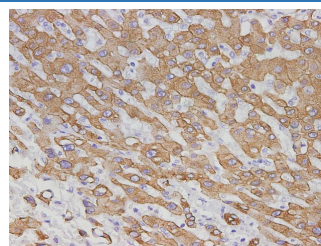
Western blot with CK-18 Polyclonal antibody at dilution of 1:5000. lane 1: Hela whole cell lysate, lane 2: A431 whole cell lysate

Observed-MW: 45 kDa

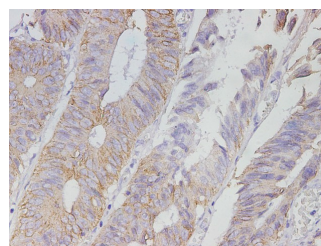
Calculated-MW: 48 kDa



Immunohistochemistry of paraffin-embedded Human lung cancer tissue using CK-18 Polyclonal Antibody at dilution of 1:2900



Immunohistochemistry of paraffin-embedded Human liver cancer tissue using CK-18 Polyclonal Antibody at dilution of 1:2900



Immunohistochemistry of paraffin-embedded Human colon cancer tissue using CK-18 Polyclonal Antibody at dilution of 1:2900

Preparation & Storage	
Storage	Store at -20°C Valid for 12 months. Avoid freeze / thaw cycles.
Shipping	The product is shipped with ice pack, upon receipt, store it immediately at the temperature recommended.

Background

For Research Use Only

Cytokeratin 18 (CK18) has a molecular weight of 45 KDa, which is a low molecular weight type A cytokeratin. It is a marker of simple epithelium, including glandular epithelium. The stratified squamous epithelium is generally negative. CK18 is mainly used in the diagnosis of adenocarcinoma.