

alpha Tubulin Monoclonal Antibody

catalog number: AN005320L

Note: Centrifuge before opening to ensure complete recovery of vial contents.

Description

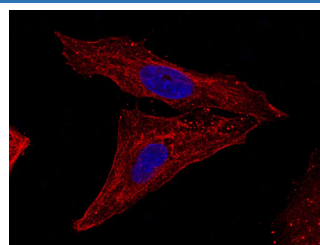
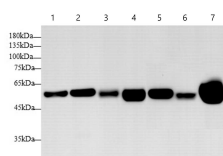
Reactivity	Human;Mouse;Rat
Immunogen	Recombinant human TUBA1B protein by E.coli
Host	Mouse
Isotype	IgG
Clone	2H2
Purification	Protein A/G Purification
Conjugation	Unconjugated
buffer	PBS with 0.05% proclin 300, 1% protective protein and 50% glycerol,pH7.4

Applications

Recommended Dilution

WB	1:2000-1:4000
IF	1:200-1:400

Data



Western blot with Anti alpha Tubulin Monoclonal Antibody at dilution of 1:3000. Lane 1: HeLa cell lysate, Lane 2: MCF-7 cell lysate, Lane 3: HT-29 cell lysate, Lane 4: Hep G2 cell lysate, Lane 5: Mouse brain tissue lysate, Lane 6: Mouse kidney tissue lysate, Lane 7: Rat brain tissue lysate.

Immunofluorescence analysis of U-2 OS cells using alpha Tubulin Monoclonal Antibody at dilution of 1:200.

Observed-MV:55 kDa

Calculated-MV:55 kDa

Preparation & Storage

Storage	Store at -20°C Valid for 12 months. Avoid freeze / thaw cycles.
Shipping	The product is shipped with ice pack, upon receipt, store it immediately at the temperature recommended.

Background

Tubulin is the major constituent of microtubules, a cylinder consisting of laterally associated linear protofilaments composed of alpha- and beta-tubulin heterodimers. Microtubules grow by the addition of GTP-tubulin dimers to the microtubule end, where a stabilizing cap forms. Below the cap, tubulin dimers are in GDP-bound state, owing to GTPase activity of alpha-tubulin.

For Research Use Only