

Recombinant Human ACSL4 Protein(Sumo Tag)

Catalog Number: PDEH100661

Note: Centrifuge before opening to ensure complete recovery of vial contents.

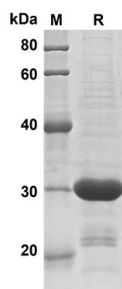
Description

Species	Human
Source	E.coli-derived Human ACSL4 protein Leu184-Tyr277, with an N-terminal Sumo
Calculated MW	26.3 kDa
Observed MW	30 kDa
Accession	O60488
Bio-activity	Not validated for activity

Properties

Purity	> 90% as determined by reducing SDS-PAGE.
Endotoxin	< 10 EU/mg of the protein as determined by the LAL method
Storage	Generally, lyophilized proteins are stable for up to 12 months when stored at -20 to -80 °C. Reconstituted protein solution can be stored at 4-8°C for 2-7 days. Aliquots of reconstituted samples are stable at < -20°C for 3 months.
Shipping	This product is provided as lyophilized powder which is shipped with ice packs.
Formulation	Lyophilized from a 0.2 µm filtered solution in PBS with 5% Trehalose and 5% Mannitol.
Reconstitution	It is recommended that sterile water be added to the vial to prepare a stock solution of 0.5 mg/mL. Concentration is measured by UV-Vis.

Data



SDS-PAGE analysis of Human ACSL4 proteins, 2µg/lane of

Recombinant Human ACSL4 proteins was resolved with SDS-PAGE under reducing conditions, showing bands at 30 KD

Background

For Research Use Only

Toll-free: 1-888-852-8623
Web: www.elabscience.com

Tel: 1-832-243-6086
Email: techsupport@elabscience.com

Fax: 1-832-243-6017

Rev. V1.2

Activation of long-chain fatty acids for both synthesis of cellular lipids, and degradation via beta-oxidation. Preferentially uses arachidonate and eicosapentaenoate as substrates. Defects in ACSL4 are the cause of mental retardation X-linked type 63 (MRX63) [MIM:300387]. Mental retardation is a mental disorder characterized by significantly sub-average general intellectual functioning associated with impairments in adaptive behavior and manifested during the developmental period. Non-syndromic mental retardation patients do not manifest other clinical signs.

Defects in ACSL4 are involved in Alport syndrome with mental retardation midface hypoplasia and elliptocytosis (ATS-MR) [MIM:300194]. A X-linked contiguous gene deletion syndrome characterized by glomerulonephritis, deafness, mental retardation, midface hypoplasia and elliptocytosis.