

STX6 Polyclonal Antibody

Catalog Number: E-AB-19196



Note: Centrifuge before opening to ensure complete recovery of vial contents.

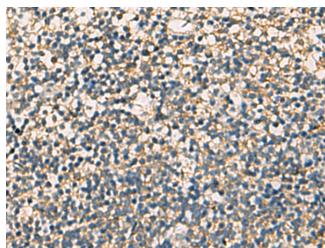
Description

Reactivity	Human, Mouse, Rat
Immunogen	Fusion protein of human STX6
Host	Rabbit
Isotype	IgG
Purification	Antigen affinity purification
Conjugation	Unconjugated
Formulation	PBS with 0.05% NaN ₃ and 40% Glycerol, pH7.4

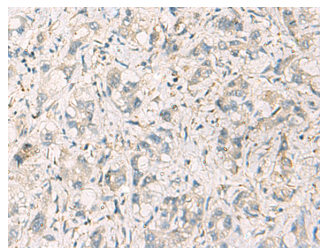
Applications Recommended Dilution

IHC	1:50-1:200
ELISA	1:5000-1:10000

Data



Immunohistochemistry of paraffin-embedded Human tonsil tissue using STX6 Polyclonal Antibody at dilution of 1:60(×200)



Immunohistochemistry of paraffin-embedded Human liver cancer tissue using STX6 Polyclonal Antibody at dilution of 1:60(×200)

Preparation & Storage

Storage Store at -20°C. Avoid freeze / thaw cycles.

Background

Syntaxin-6 (STX6) is a SNARE protein located in the trans-Golgi network (TGN) and endosomes. It associates with a variety of SNARE proteins and is involved in intracellular vesicle trafficking. STX6 is required for sorting proteins from endosomes toward either the TGN or lysosomes.

For Research Use Only

A Reliable Research Partner in Life Science and Medicine

Toll-free: 1-888-852-8623

Web: www.elabscience.com

Tel: 1-832-243-6086

Email: techsupport@elabscience.com

Fax: 1-832-243-6017