

Anti-Human CD3-FITC/CD19-PE Cocktail

Catalog Number: E-AB-FC0004

Note: Centrifuge before opening to ensure complete recovery of vial contents.

Description

| | |
|--------------------------------|--|
| Reactivity | Human |
| Clone No. | OKT-3;CB19 |
| Conjugation | FITC;PE |
| Conjugation Information | FITC is designed to be excited by the Blue laser (488 nm) and detected using an optical filter centered near 530 nm (e.g., a 525/40 nm bandpass filter). PE is designed to be excited by the Blue (488 nm), Green (532 nm) and Yellow-Green (561 nm) lasers and detected using an optical filter centered near 575 nm (e.g., a 585/42 nm bandpass filter). |
| Storage Buffer | Phosphate buffered solution, pH 7.2, containing 0.09% sodium azide and 1% BSA. |

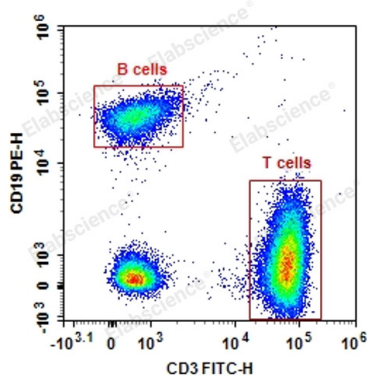
Applications

Recommended usage

FCM

For whole blood samples, add 5 μ L Anti-Human CD3-FITC/CD19-PE Cocktail to 100 μ L anticoagulant-treated blood sample. Mix and incubate the sample at 4°C in the dark for 30 min. Remove red blood cells with RBC lysis solution following the manufacturer's instruction. Wash the cell with cell staining buffer and discard the supernatant after centrifugation at 300 g for 5 min. Resuspend the cells with 200 μ L cell staining buffer and load the sample on flow cytometer for detection. For other samples, 1×10^6 dissociated single cells are centrifuged at 300 g for 5 min with the supernatant discarded. Resuspend the cells with 100 μ L cell staining buffer and add 5 μ L Anti-Human CD3-FITC/CD19-PE Cocktail. Mix and incubate the sample at 4°C in the dark for 30 min. Add cell staining buffer to each tube, centrifuge at 300 g for 5 min and discard the supernatant. Resuspend the cells with 200 μ L cell staining buffer and load the sample on flow cytometer for detection.

Data



Human peripheral blood lymphocytes are stained with Anti-Human CD3-FITC/CD19-PE.

Preparation & Storage

| | |
|-----------------|---|
| Storage | Keep as concentrated solution. This product can be stored at 2-8°C for 12 months. Please protected from prolonged exposure to light and do not freeze. |
| Shipping | Ice bag |

Antigen Information

For Research Use Only

Background

This product is a FCM antibody cocktail made up of FITC Anti-Human CD3 Antibody [Clone: OKT-3] (Mouse IgG2a, κ) and PE Anti-Human CD19 Antibody [Clone: CB19] (Mouse IgG1, κ);

CD3 is a heterotetrameric protein consisting of a CD3 γ , a CD3 δ and 2 CD3 ϵ . It forms complex with TCR. OKT-3 recognize human CD3 ϵ . Human CD3 is expressed on the surface of T cells and NKT cells.;

CD19 is a single-chain transmembrane glycoprotein expressed on B cells of all stages except plasma cells. It is a common marker for B cells. CD19 is also expressed in follicular dendritic cells. It forms complex with CD21 and CD84, which forms co-receptor with BCR. It takes part in B cell development, activation and differentiation.