

TAL1 Polyclonal Antibody

Catalog Number: E-AB-64380

Note: Centrifuge before opening to ensure complete recovery of vial contents.

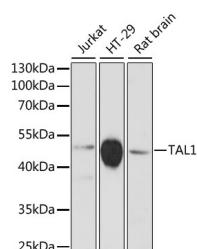
Description

Reactivity	Human, Rat
Immunogen	Recombinant fusion protein of human TAL1 (NP_003180.1).
Host	Rabbit
Isotype	IgG
Purification	Affinity purification
Conjugation	Unconjugated
Formulation	PBS with 0.02% sodium azide, 50% glycerol, pH7.3.

Applications Recommended Dilution

WB	1:500-1:2000
-----------	--------------

Data



Western blot analysis of extracts of various cell lines using TAL1 Polyclonal Antibody at dilution of 1:3000.

Observed MW: 50kDa

Calculated Mw: 16kDa/31kDa/34kDa

Preparation & Storage

Storage Store at -20°C. Avoid freeze / thaw cycles.

Background

TAL1 (TAL BHLH Transcription Factor 1, Erythroid Differentiation Factor) is a Protein Coding gene. Diseases associated with TAL1 include Leukemia, Acute Lymphoblastic and T-Cell Acute Lymphocytic Leukemia-1. Among its related pathways are NF-kappaB Signaling and MAPK-Erk Pathway. GO annotations related to this gene include transcription factor activity, sequence-specific DNA binding and chromatin binding. An important paralog of this gene is LYL1.

For Research Use Only

A Reliable Research Partner in Life Science and Medicine

Toll-free: 1-888-852-8623

Web: www.elabscience.com

Tel: 1-832-243-6086

Email: techsupport@elabscience.com

Fax: 1-832-243-6017