

SLC6A7 Polyclonal Antibody

catalog number: E-AB-16846

Note: *Centrifuge before opening to ensure complete recovery of vial contents.*

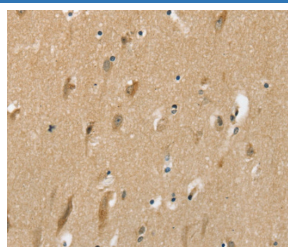
Description

Reactivity	Human;Rat
Immunogen	Synthetic peptide of human SLC6A7
Host	Rabbit
Isotype	IgG
Purification	Affinity purification
Buffer	Phosphate buffered solution, pH 7.4, containing 0.05% stabilizer and 50% glycerol.

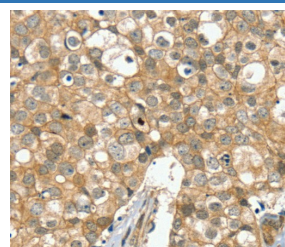
Applications Recommended Dilution

IHC	1:25-1:100
------------	------------

Data



Immunohistochemistry of paraffin-embedded Human brain tissue using SLC6A7 Polyclonal Antibody at dilution 1:30



Immunohistochemistry of paraffin-embedded Human breast cancer tissue using SLC6A7 Polyclonal Antibody at dilution 1:30

Preparation & Storage

Storage	Store at -20°C Valid for 12 months. Avoid freeze / thaw cycles.
Shipping	The product is shipped with ice pack, upon receipt, store it immediately at the temperature recommended.

Background

This gene is a member of the gamma-aminobutyric acid (GABA) neurotransmitter gene family and encodes a high-affinity mammalian brain L-proline transporter protein. This transporter protein differs from other sodium-dependent plasma membrane carriers by its pharmacological specificity, kinetic properties, and ionic requirements.

For Research Use Only