

# RAB22A Polyclonal Antibody

Catalog Number:E-AB-91175



**Note:** Centrifuge before opening to ensure complete recovery of vial contents.

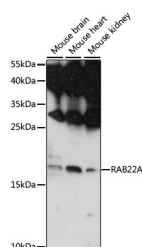
## Description

|                     |   |
|---------------------|---|
| <b>Reactivity</b>   | Mouse   |
| <b>Immunogen</b>    | A synthetic peptide of human RAB22A             |
| <b>Host</b>         | Rabbit  |
| <b>Isotype</b>      | IgG   |
| <b>Purification</b> | Affinity purification                           |
| <b>Conjugation</b>  | Unconjugated                                    |
| <b>Formulation</b>  | PBS with 0.01% thiomersal, 50% glycerol, pH7.3. |

## Applications Recommended Dilution

|           |              |
|-----------|--------------|
| <b>WB</b> | 1:200-1:2000 |
|-----------|--------------|

## Data



Western blot analysis of extracts of various cell lines using RAB22A Polyclonal Antibody at 1:1000 dilution.

**Observed Mw:22kDa**  
**Calculated Mw:21kDa**

## Preparation & Storage

**Storage** Store at -20°C. Avoid freeze/thaw cycles.

## Background

The protein encoded by this gene is a member of the RAB family of small GTPases. The GTP-bound form of the encoded protein has been shown to interact with early-endosomal antigen 1, and may be involved in the trafficking of and interaction between endosomal compartments.

## For Research Use Only

A Reliable Research Partner in Life Science and Medicine

Toll-free: 1-888-852-8623

Web: [www.elabscience.com](http://www.elabscience.com)

Tel: 1-832-243-6086

Email: [techsupport@elabscience.com](mailto:techsupport@elabscience.com)

Fax: 1-832-243-6017