

Na⁺/K⁺-ATPase alpha1 Polyclonal Antibody

Catalog Number:E-AB-70349



Note: Centrifuge before opening to ensure complete recovery of vial contents.

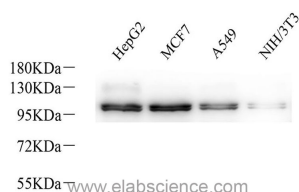
Description

Reactivity	Human,Mouse,Rat
Immunogen	KLH conjugated Synthetic peptide corresponding to human ATP1A1
Host	Rabbit
Isotype	IgG
Purification	Affinity purification
Conjugation	Unconjugated
Formulation	PBS with 0.02% sodium azide, 1% protective protein and 50% glycerol, pH7.4

Applications Recommended Dilution

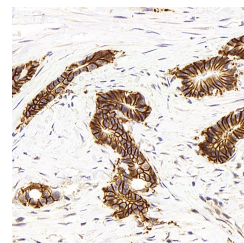
WB	1:500-1:2000
IHC	1:300-1:800

Data

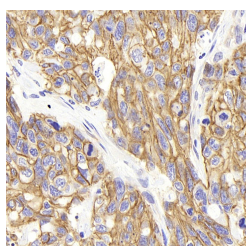


Western Blot analysis of various samples using Na⁺/K⁺-ATPase alpha1 Polyclonal Antibody at dilution of 1:800.

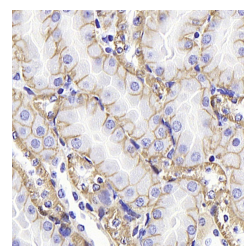
Observed Mw:100kDa
Calculated Mw:113kDa



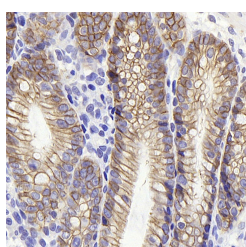
Immunohistochemistry analysis of paraffin-embedded human colon using Na⁺/K⁺-ATPase alpha1 Polyclonal Antibody at dilution of 1:300.



Immunohistochemistry analysis of paraffin-embedded human lymphoma using Na⁺/K⁺-ATPase alpha1 Polyclonal Antibody at dilution of 1:300.



Immunohistochemistry analysis of paraffin-embedded mouse kidney using Na⁺/K⁺-ATPase alpha1 Polyclonal Antibody at dilution of 1:300.



For Research Use Only

A Reliable Research Partner in Life Science and Medicine

Toll-free: 1-888-852-8623

Web: www.elabscience.com

Tel: 1-832-243-6086

Email: techsupport@elabscience.com

Fax: 1-832-243-6017

Na⁺/K⁺-ATPase alpha1 Polyclonal Antibody

Catalog Number: E-AB-70349



Immunohistochemistry analysis of paraffin-embedded Rat colon using Na⁺/K⁺-ATPase alpha1 Polyclonal Antibody at dilution of 1:300.

Preparation & Storage

Storage Store at -20°C. Avoid freeze / thaw cycles.

Background

The protein encoded by this gene belongs to the family of P-type cation transport ATPases, and to the subfamily of Na⁺/K⁺-ATPases. Na⁺/K⁺-ATPase is an integral membrane protein responsible for establishing and maintaining the electrochemical gradients of Na and K ions across the plasma membrane. These gradients are essential for osmoregulation, for sodium-coupled transport of a variety of organic and inorganic molecules, and for electrical excitability of nerve and muscle. This enzyme is composed of two subunits, a large catalytic subunit (alpha) and a smaller glycoprotein subunit (beta). The catalytic subunit of Na⁺/K⁺-ATPase is encoded by multiple genes. This gene encodes an alpha 1 subunit. Multiple transcript variants encoding different isoforms have been found for this gene.

For Research Use Only

A Reliable Research Partner in Life Science and Medicine

Toll-free: 1-888-852-8623

Web: www.elabscience.com

Tel: 1-832-243-6086

Email: techsupport@elabscience.com

Fax: 1-832-243-6017