

# EAAT1 Polyclonal Antibody

catalog number: E-AB-31258

**Note:** Centrifuge before opening to ensure complete recovery of vial contents.

## Description

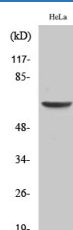
<b>Reactivity</b>	Human
<b>Immunogen</b>	Synthesized peptide derived from the C-terminal region of human EAAT1.
<b>Host</b>	Rabbit
<b>Isotype</b>	IgG
<b>Purification</b>	Affinity purification
<b>Conjugation</b>	Unconjugated
<b>buffer</b>	Phosphate buffered solution, pH 7.4, containing 0.05% stabilizer, 0.5% protein protectant and 50% glycerol.

## Applications

## Recommended Dilution

<b>WB</b>	1:500-1:2000
-----------	--------------

## Data



Western Blot analysis of HeLa cells with EAAT1 Polyclonal Antibody.

**Observed-MV:65 kDa**

**Calculated-MV:60 kDa**

## Preparation & Storage

<b>Storage</b>	Store at -20°C Valid for 12 months. Avoid freeze / thaw cycles.
<b>Shipping</b>	The product is shipped with ice pack, upon receipt, store it immediately at the temperature recommended.

## Background

This gene encodes a member of a member of a high affinity glutamate transporter family. This gene functions in the termination of excitatory neurotransmission in central nervous system. Mutations are associated with episodic ataxia, Type 6. Alternative splicing results in multiple transcript variants.

## For Research Use Only