

PRSS50 Polyclonal Antibody

Catalog Number: E-AB-53609



Note: Centrifuge before opening to ensure complete recovery of vial contents.

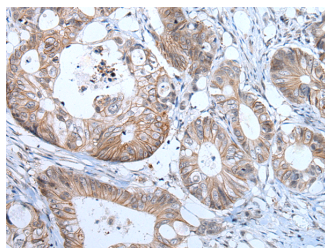
Description

Reactivity	Human
Immunogen	Synthetic peptide of human PRSS50
Host	Rabbit
Isotype	IgG
Purification	Antigen affinity purification
Conjugation	Unconjugated
Formulation	PBS with 0.05% NaN ₃ and 40% Glycerol, pH7.4

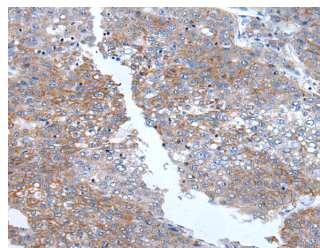
Applications Recommended Dilution

IHC	1:40-1:200
ELISA	1:5000-1:10000

Data



Immunohistochemistry of paraffin-embedded Human colorectal cancer tissue using PRSS50 Polyclonal Antibody at dilution of 1:65 (x200)



Immunohistochemistry of paraffin-embedded Human liver cancer tissue using PRSS50 Polyclonal Antibody at dilution of 1:65 (x200)

Preparation & Storage

Storage Store at -20°C. Avoid freeze / thaw cycles.

Background

PRSS50 (Protease, Serine 50) is a Protein Coding gene. Gene Ontology (GO) annotations related to this gene include serine-type endopeptidase activity and threonine-type endopeptidase activity. An important paralog of this gene is TPSB2.

For Research Use Only

A Reliable Research Partner in Life Science and Medicine

Toll-free: 1-888-852-8623

Web: www.elabscience.com

Tel: 1-832-243-6086

Email: techsupport@elabscience.com

Fax: 1-832-243-6017