

BCAS3 Polyclonal Antibody

catalog number: E-AB-15963

Note: Centrifuge before opening to ensure complete recovery of vial contents.

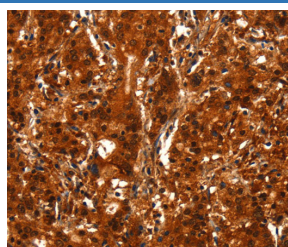
Description

| | |
|---------------------|--|
| Reactivity | Human;Mouse |
| Immunogen | Synthetic peptide of human BCAS3 |
| Host | Rabbit |
| Isotype | IgG |
| Purification | Affinity purification |
| Buffer | Phosphate buffered solution, pH 7.4, containing 0.05% stabilizer and 50% glycerol. |

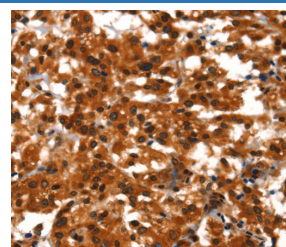
Applications Recommended Dilution

| | |
|------------|------------|
| IHC | 1:50-1:200 |
|------------|------------|

Data



Immunohistochemistry of paraffin-embedded Human gastric cancer tissue using BCAS3 Polyclonal Antibody at dilution 1:40



Immunohistochemistry of paraffin-embedded Human thyroid cancer tissue using BCAS3 Polyclonal Antibody at dilution 1:40

Preparation & Storage

| | |
|-----------------|--|
| Storage | Store at -20°C Valid for 12 months. Avoid freeze / thaw cycles. |
| Shipping | The product is shipped with ice pack, upon receipt, store it immediately at the temperature recommended. |

Background

BCAS3 (breast carcinoma amplified sequence 3), also designated MAAB or GAOB1, is a 913 amino acid protein that is believed to be involved in breast cancer progression. The gene is regulated by ER (estrogen receptor alpha) and expressed in multiple tissues, including malignant human brain lesions. It is overexpressed and amplified in breast cancer cell lines. BCAS3 contains three WD40 repeat regions, a bromodomain, a rare zinc-finger motif, four probable DNA-binding domains, and two kinase-inducible phosphorylation domains. Five variants are produced due to alternative splicing. BCAS3 interacts with histone H3 and PCAF, which is indicative of histone acetyltransferase activity. BCAS3 also exhibits ER transactivation activity by acting as a coactivator with PELP1 or MTA1. The amplification and translocation between the BCAS3 gene and the BCAS4 gene results in a fusion transcript is overexpressed in MCF-7 cells.

For Research Use Only