

MAGEC1 Polyclonal Antibody

catalog number: E-AB-70250

Note: Centrifuge before opening to ensure complete recovery of vial contents.

Description

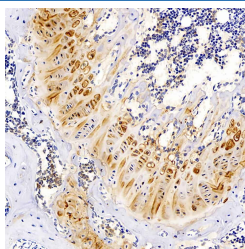
Reactivity	Mouse;Rat
Immunogen	KLH conjugated Synthetic peptide corresponding to Mouse Aggrecan
Host	Rabbit
Isotype	IgG
Purification	Affinity purification
Conjugation	Unconjugated
Buffer	Phosphate buffered solution, pH 7.4, containing 0.05% stabilizer, 1% protein protectant and 50% glycerol.

Applications

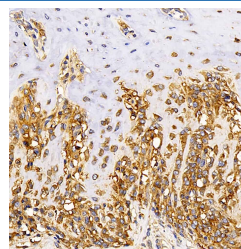
Recommended Dilution

IHC	1:200-1:800
------------	-------------

Data



Immunohistochemistry analysis of paraffin-embedded mouse bone using MAGEC1 Polyclonal Antibody at dilution of 1:300.



Immunohistochemistry analysis of paraffin-embedded rat bone using MAGEC1 Polyclonal Antibody at dilution of 1:300.

Preparation & Storage

Storage	Store at -20°C Valid for 12 months. Avoid freeze / thaw cycles.
Shipping	The product is shipped with ice pack, upon receipt, store it immediately at the temperature recommended.

Background

This gene is a member of the melanoma antigen gene (MAGE) family. The proteins of this family are tumor-specific antigens that can be recognized by autologous cytolytic T lymphocytes. This protein contains a large number of unique short repetitive sequences in front of the MAGE-homologous sequence, and therefore is about 800 aa longer than the other MAGE proteins.