

## Recombinant CTHRC1 Monoclonal Antibody

catalog number: **AN300237P**

**Note:** Centrifuge before opening to ensure complete recovery of vial contents.

### Description

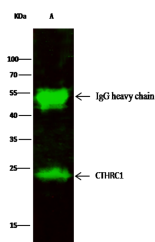
<b>Reactivity</b>	Human
<b>Immunogen</b>	Recombinant Human CTHRC1 protein
<b>Host</b>	Rabbit
<b>Isotype</b>	IgG
<b>Clone</b>	4F10
<b>Purification</b>	Protein A
<b>Buffer</b>	0.2 µm filtered solution in PBS

### Applications

### Recommended Dilution

<b>WB</b>	1:500-1:2000
<b>IP</b>	1-4 µL/mg of lysate

### Data



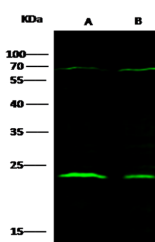
Immunoprecipitation analysis using 2 µL anti-CTHRC1 Monoclonal Antibody and 15 µl of 50 % Protein G agarose.

Western blot was performed from the immunoprecipitate using CTHRC1 Monoclonal Antibody at a dilution of 1:200.

Lane A: 0.5 mg HepG2 Whole Cell Lysate

**Observed-MW: 23 kDa**

**Calculated-MW: 26 kDa**



Western Blot with CTHRC1 Monoclonal Antibody at dilution of 1:500. Lane A: HepG2 Whole Cell Lysate, Lane B: HEK293 Whole Cell Lysate, Lysates/proteins at 30 µg per lane.

**Observed-MW: 23 kDa**

**Calculated-MW: 26 kDa**

### Preparation & Storage

<b>Storage</b>	This antibody can be stored at 2°C-8°C for one month without detectable loss of activity. Antibody products are stable for twelve months from date of receipt when stored at -20°C to -80°C. Preservative-Free. Avoid repeated freeze-thaw cycles.
<b>Shipping</b>	Ice bag

### Background

This locus encodes a protein that may play a role in the cellular response to arterial injury through involvement in vascular remodeling. Mutations at this locus have been associated with Barrett esophagus and esophageal adenocarcinoma. Alternatively spliced transcript variants have been described.

### For Research Use Only