

Recombinant Human FGF6 Protein(Sumo Tag)

Catalog Number: PDEH100560

Note: Centrifuge before opening to ensure complete recovery of vial contents.

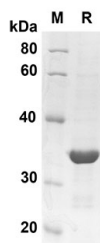
Description

Species	Human
Source	E.coli-derived Human FGF6 protein Gly41-Lle208, with an N-terminal Sumo
Calculated MW	34.5 kDa
Observed MW	34.5 kDa
Accession	P10767
Bio-activity	Not validated for activity

Properties

Purity	> 90% as determined by reducing SDS-PAGE.
Endotoxin	< 10 EU/mg of the protein as determined by the LAL method
Storage	Generally, lyophilized proteins are stable for up to 12 months when stored at -20 to -80 °C. Reconstituted protein solution can be stored at 4-8°C for 2-7 days. Aliquots of reconstituted samples are stable at < -20°C for 3 months.
Shipping	This product is provided as lyophilized powder which is shipped with ice packs.
Formulation	Lyophilized from a 0.2 µm filtered solution in PBS with 5% Trehalose and 5% Mannitol.
Reconstitution	It is recommended that sterile water be added to the vial to prepare a stock solution of 0.5 mg/mL. Concentration is measured by UV-Vis.

Data



SDS-PAGE analysis of Human FGF6 proteins, 2 µg/lane of Recombinant Human FGF6 proteins was resolved with SDS-PAGE under reducing conditions, showing bands at 34.5 KD

Background

FGF6, also known as FGF-6, belongs to the fibroblast growth factor (FGF) family. Members of this family possess broad mitogenic and cell survival activities, and are involved in a variety of biological processes, including embryonic development, cell growth, morphogenesis, tissue repair, tumor growth and invasion. FGF6 plays an important role in the regulation of cell proliferation, cell differentiation, angiogenesis and myogenesis. It is also required for normal muscle regeneration. FGF6 gene displayed oncogenic transforming activity when transfected into mammalian cells.

For Research Use Only

Toll-free: 1-888-852-8623
Web: www.elabscience.com

Tel: 1-832-243-6086
Email: techsupport@elabscience.com

Fax: 1-832-243-6017