

Recombinant Human CD208/LAMP3/DC-LAMP Protein (His Tag)



Catalog Number: PKSH031547

Note: Centrifuge before opening to ensure complete recovery of vial contents.

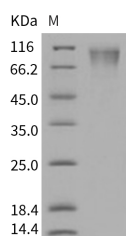
Description

Synonyms	CD208;DC LAMP;DC-LAMP;DCLAMP;LAMP;LAMP-3;TSC403
Species	Human
Expression Host	HEK293 Cells
Sequence	Lys 28-Thr 381
Accession	NP_055213.2
Calculated Molecular Weight	39.0 kDa
Observed molecular weight	70-90 kDa
Tag	C-His

Properties

Purity	> 95 % as determined by reducing SDS-PAGE.
Endotoxin	< 1.0 EU per µg of the protein as determined by the LAL method.
Storage	Generally, lyophilized proteins are stable for up to 12 months when stored at -20 to -80°C. Reconstituted protein solution can be stored at 4-8°C for 2-7 days. Aliquots of reconstituted samples are stable at < -20°C for 3 months.
Shipping	This product is provided as lyophilized powder which is shipped with ice packs.
Formulation	Lyophilized from sterile PBS, pH 7.4 Normally 5 % - 8 % trehalose, mannitol and 0.01 % Tween80 are added as protectants before lyophilization. Please refer to the specific buffer information in the printed manual.
Reconstitution	Please refer to the printed manual for detailed information.

Data



> 95 % as determined by reducing SDS-PAGE.

Background

Dendritic cell-lysosomal associated membrane protein (DC-LAMP)/CD208, also known as LAMP3, is a member of the lysosomal associated membrane protein (LAMP) family, which is specifically expressed by human dendritic cells (DCs) upon activation and therefore serves as marker of human DC maturation. Confocal and immunoelectron microscopy showed that mouse DC-LAMP protein co-localizes with lbn180, a specific marker for the limiting membrane of lamellar bodies that contain surfactant protein B. The present study demonstrates that DC-LAMP is constitutively expressed by mouse, sheep, and human type II pneumocytes. DC-LAMP is constitutively expressed in normal type II pneumocytes. DC-LAMP is detected first in activated human DC within MHC class II molecules-containing compartments just before the translocation of MHC class II-peptide complexes to the cell surface, suggesting a possible involvement in this process.

For Research Use Only

A Reliable Research Partner in Life Science and Medicine

Toll-free: 1-888-852-8623

Web: www.elabscience.com

Tel: 1-832-243-6086

Email: techsupport@elabscience.com

Fax: 1-832-243-6017

Recombinant Human CD208/LAMP3/DC-LAMP Protein (His Tag)



Catalog Number: PKSH031547

Furthermore, overexpression of LAMP3 is actively involved in tumor invasion through increased migration into lymphovascular spaces.

For Research Use Only

A Reliable Research Partner in Life Science and Medicine

Toll-free: 1-888-852-8623

Web: www.elabscience.com

Tel: 1-832-243-6086

Email: techsupport@elabscience.com

Fax: 1-832-243-6017