

CD13 Polyclonal Antibody

Catalog Number:E-AB-70224



Note: Centrifuge before opening to ensure complete recovery of vial contents.

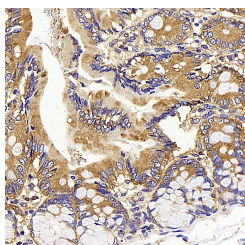
Description

Reactivity	Rat
Immunogen	Recombinant protein corresponding to Mouse CD13
Host	Rabbit
Isotype	IgG
Purification	Affinity purification
Conjugation	Unconjugated
Formulation	PBS with 0.02% sodium azide, 1% protective protein and 50% glycerol, pH7.4

Applications Recommended Dilution

IHC	1:500-1:2000
------------	--------------

Data



Immunohistochemistry analysis of paraffin-embedded rat colon using CD13 Polyclonal Antibody at dilution of 1:400.

Preparation & Storage

Storage	Store at -20°C. Avoid freeze / thaw cycles.
----------------	---

Background

CD13/aminopeptidase N is a 150 kDa cell surface glycoprotein, which was originally used as a marker for subpopulations of hematopoietic cells. CD13 is widely distributed in a variety of mammalian cells, such as monocyte/macrophages, fibroblasts, neutrophils, endothelial cells, and epithelial cells. CD13 is also a pan-myeloid marker, present on mature granulocytes and monocytes.

For Research Use Only

A Reliable Research Partner in Life Science and Medicine

Toll-free: 1-888-852-8623

Web: www.elabscience.com

Tel: 1-832-243-6086

Email: techsupport@elabscience.com

Fax: 1-832-243-6017