

PE Anti-Mouse IgM Antibody[RMM-1]

Catalog Number: E-AB-F1190D

Note: Centrifuge before opening to ensure complete recovery of vial contents.

Description

Reactivity	Mouse
Host	Rat
Isotype	Rat IgG2a, κ
Clone No.	RMM-1
Isotype Control	PE Rat IgG2a, κ Isotype Control[2A3] [Product E-AB-F09832D]
Conjugation	PE
Conjugation Information	PE is designed to be excited by the Blue (488 nm), Green (532 nm) and Yellow-Green (561 nm) lasers and detected using an optical filter centered near 575 nm (e.g., a 585/42 nm bandpass filter).
Storage Buffer	Phosphate buffered solution, pH 7.2, containing 0.09% sodium azide and 1% BSA.

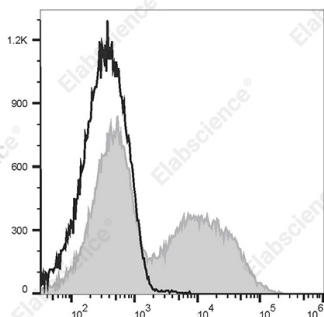
Applications

Recommended usage

FCM

Each lot of this antibody is quality control tested by flow cytometric analysis. **The amount of the reagent is suggested to be used 5 μ L of antibody per test (million cells in 100 μ L staining volume or per 100 μ L of whole blood).** Please check your vial before the experiment. Since applications vary, the appropriate dilutions must be determined for individual use.

Data



C57BL/6 murine splenocytes are stained with PE Anti-Mouse IgM Antibody[RMM-1] (filled gray histogram) or PE Rat IgG2a, κ Isotype Control (empty black histogram).

Preparation & Storage

Storage	Keep as concentrated solution. This product can be stored at 2-8°C for 12 months. Please protected from prolonged exposure to light and do not freeze.
Shipping	Ice bag

Antigen Information

Alternate Names	IGHM;Immunoglobulin M;Immunoglobulin heavy constant mu
Uniprot ID	P01872
Gene ID	16019

For Research Use Only

Background

IgM is the first immunoglobulin made by B cells in the immune response. Surface IgM is expressed on the majority of mature B cells.