

FITC Anti-Human HLA-A,B,C Antibody[W6/32]

Catalog Number: E-AB-F1130C

Note: Centrifuge before opening to ensure complete recovery of vial contents.

Description

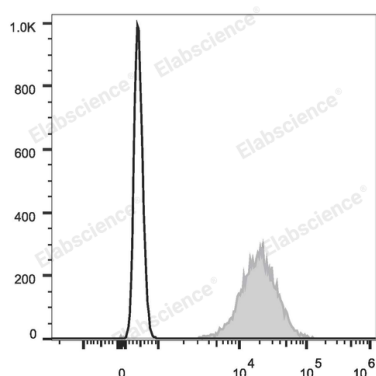
Reactivity	Human
Host	Mouse
Isotype	Mouse IgG2a, κ
Clone No.	W6/32
Isotype Control	FITC Mouse IgG2a, κ Isotype Control[C1.18.4] [Product E-AB-F09802C]
Conjugation	FITC
Conjugation Information	FITC is designed to be excited by the Blue laser (488 nm) and detected using an optical filter centered near 530 nm (e.g., a 525/40 nm bandpass filter).
Storage Buffer	Phosphate buffered solution, pH 7.2, containing 0.09% stabilizer.

Applications

Recommended usage

FCM Each lot of this antibody is quality control tested by flow cytometric analysis. **The amount of the reagent is suggested to be used 5 μL of antibody per test (million cells in 100 μL staining volume or per 100 μL of whole blood).** Please check your vial before the experiment. Since applications vary, the appropriate dilutions must be determined for individual use.

Data



Human peripheral blood lymphocytes are stained with FITC Anti-Human HLA-A,B,C Antibody (filled gray histogram). Unstained lymphocytes (empty black histogram) are used as control.

Preparation & Storage

Storage	Keep as concentrated solution. This product can be stored at 2-8°C for 24 months. Please protected from prolonged exposure to light and do not freeze.
Shipping	Ice bag

Antigen Information

Alternate Names	MHC class I;Major Histocompatibility Class I
Uniprot ID	P04439;P01889;P10321
Gene ID	3105;3106;3107

For Research Use Only

Background

MHC class I antigens associated with β 2-microglobulin are expressed by all human nucleated cells. MHC class I molecules are involved in presentation of antigens to CD8 + T cells. They play an important role in cell-mediated immune responses and tumor surveillance.