

## AF/LE Purified Anti-Mouse CD1d Antibody[1B1]

catalog number: AN003560

**Note:** Centrifuge before opening to ensure complete recovery of vial contents.

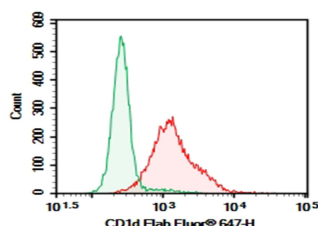
### Description

<b>Reactivity</b>	Mouse
<b>Immunogen</b>	Recombinant Mouse CD1d protein
<b>Host</b>	Rat
<b>Isotype</b>	Rat IgG2b, $\kappa$
<b>Clone</b>	1B1
<b>Purification</b>	>98%, Protein A/G purified
<b>Conjugation</b>	None (AF/LE)
<b>Buffer</b>	Sterile PBS, pH 7.2. < 1.0 EU per mg of the antibody as determined by the LAL method.

### Applications Recommended Dilution

<b>FCM</b>	2 $\mu\text{g/mL}$ ( $0.5 \times 10^6$ - $1 \times 10^6$ cells)
------------	---

### Data



C57/BL6 Mouse splenocytes were stained with 0.2  $\mu\text{g}$  AF/LE Purified Anti-Mouse CD1d Antibody[1B1] (Right) and 0.2  $\mu\text{g}$  Rat IgG2b,  $\kappa$  Isotype Control (Left), followed by Elab Fluor® 647-conjugated Goat Anti-Rat IgG Secondary Antibody.

### Preparation & Storage

<b>Storage</b>	Store at 4°C valid for 12 months or -20°C valid for long term storage, avoid freeze / thaw cycles. This preparation contains no preservatives, thus it should be handled under aseptic conditions.
<b>Shipping</b>	Ice bag

### Background

CD1d, known as CD1.1 and Ly-38, is a 48 kD type I membrane glycoprotein with structural similarities to MHC class I and is non-covalently associated with  $\beta 2$ -microglobulin. In humans, CD1 family consists of group I proteins (CD1a, CD1b, and CD1c), group II (CD1d), and group III (CD1e). But CD1d is the only CD1 molecule has been found in mouse. Mouse CD1d has broad tissue distribution, and is found on leukocytes, dendritic cells, epithelial cells, and thymocytes. CD1d plays a role in non-peptide glycolipid antigen presentation to CD1d-restricted T cells. It has been shown that PKC $\delta$  is a critical regulator of CD1d-mediated antigen presentation.