

Recombinant Mouse IL-16 Protein(Gst Tag)

Catalog Number: PDEM100166

Note: Centrifuge before opening to ensure complete recovery of vial contents.

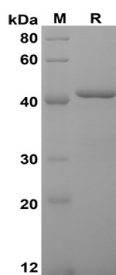
Description

Species	Mouse
Source	E.coli-derived Mouse IL-16 protein Ser1205-Ser1322, with an N-terminal Gst
Calculated MW	38.9 kDa
Observed MW	42 kDa
Accession	O54824
Bio-activity	Not validated for activity

Properties

Purity	> 90% as determined by reducing SDS-PAGE.
Endotoxin	< 10 EU/mg of the protein as determined by the LAL method
Storage	Generally, lyophilized proteins are stable for up to 12 months when stored at -20 to -80 °C. Reconstituted protein solution can be stored at 4-8°C for 2-7 days. Aliquots of reconstituted samples are stable at < -20°C for 3 months.
Shipping	This product is provided as lyophilized powder which is shipped with ice packs.
Formulation	Lyophilized from a 0.2 µm filtered solution in PBS with 5% Trehalose and 5% Mannitol.
Reconstitution	It is recommended that sterile water be added to the vial to prepare a stock solution of 0.5 mg/mL. Concentration is measured by UV-Vis.

Data



SDS-PAGE analysis of Mouse IL-16 proteins, 2 µg/lane of Recombinant Mouse IL-16 proteins was resolved with SDS-PAGE under reducing conditions, showing bands at 42 KD

Background

Interleukin 16, also known as lymphocyte chemoattractant factor (LCF), refers to the C-terminal peptide of Mouse pro-IL-16 or neuronal IL-16, which are nuclear and cytoplasmic PD2 domain containing proteins. The C-termini of these proteins are cleaved by Caspase-3, resulting in the release of secreted IL-16. Mature IL-16 has been shown to bind the cell surface receptor CD4 and function as an immunomodulatory cytokine. The C-terminal peptide of human and Mouse IL-16 share approximately 86% amino acid sequence identity.

For Research Use Only

Toll-free: 1-888-852-8623
Web: www.elabscience.com

Tel: 1-832-243-6086
Email: techsupport@elabscience.com

Fax: 1-832-243-6017

Rev. V1.7