

WVOX Polyclonal Antibody

Catalog Number: E-AB-17623



Note: Centrifuge before opening to ensure complete recovery of vial contents.

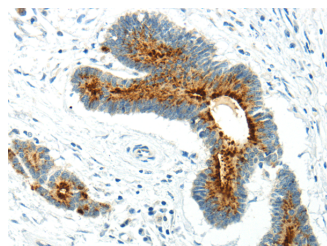
Description

Reactivity	Human, Mouse
Immunogen	Synthetic peptide of human WVOX
Host	Rabbit
Isotype	IgG
Purification	Affinity purification
Conjugation	Unconjugated
Formulation	PBS with 0.05% sodium azide and 50% glycerol, PH7.4

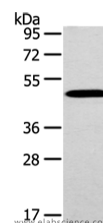
Applications Recommended Dilution

WB	1:500-2000
IHC	1:20-100
ELISA	1:2000-5000

Data



Immunohistochemistry of paraffin-embedded Human colorectal cancer using WVOX Polyclonal Antibody at dilution of 1/20
Calculated Mw: 47 kDa



Western Blot analysis of Mouse brain tissue using WVOX Polyclonal Antibody at dilution of 1/200

Preparation & Storage

Storage Store at -20°C. Avoid freeze / thaw cycles.

Background

This gene encodes a member of the short-chain dehydrogenases/reductases (SDR) protein family. This gene spans the FRA16D common chromosomal fragile site and appears to function as a tumor suppressor gene. Expression of the encoded protein is able to induce apoptosis, while defects in this gene are associated with Human, Mouse multiple types of cancer. Disruption of this gene is also associated with autosomal recessive spinocerebellar ataxia 12.

For Research Use Only

A Reliable Research Partner in Life Science and Medicine

Toll-free: 1-888-852-8623

Web: www.elabscience.com

Tel: 1-832-243-6086

Email: techsupport@elabscience.com

Fax: 1-832-243-6017