

## PE/Cyanine5 Anti-Human HLA-DR Antibody[L243]

**Catalog Number:** E-AB-F1111G

**Note:** Centrifuge before opening to ensure complete recovery of vial contents.

### Description

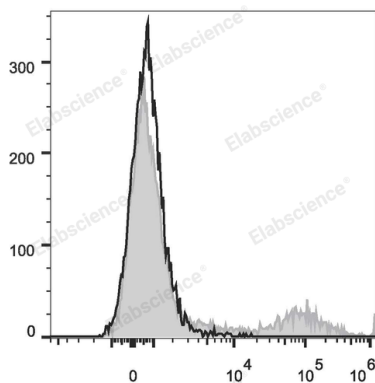
<b>Reactivity</b>	Human
<b>Host</b>	Mouse
<b>Isotype</b>	Mouse IgG2a, κ
<b>Clone No.</b>	L243
<b>Isotype Control</b>	PE/Cyanine5 Mouse IgG2a, κ Isotype Control[C1.18.4] [Product E-AB-F09802G]
<b>Conjugation</b>	PE/Cyanine 5
<b>Conjugation Information</b>	PE/Cyanine5 is designed to be excited by the Blue (488 nm), Green (532 nm) and yellow-green (561 nm) lasers and detected using an optical filter centered near 670 nm (e.g., a 690/50 nm bandpass filter).
<b>Storage Buffer</b>	Phosphate buffered solution, pH 7.2, containing 0.09% stabilizer and 1% protein protectant.

### Applications

### Recommended usage

<b>FCM</b>	Each lot of this antibody is quality control tested by flow cytometric analysis. <b>The amount of the reagent is suggested to be used 5 μL of antibody per test (million cells in 100 μL staining volume or per 100 μL of whole blood).</b> Please check your vial before the experiment. Since applications vary, the appropriate dilutions must be determined for individual use.
------------	---

### Data



Human peripheral blood lymphocytes are stained with PE/Cyanine5 Anti-Human HLA-DR Antibody (filled gray histogram). Unstained lymphocytes (empty black histogram) are used as control.

### Preparation & Storage

<b>Storage</b>	Keep as concentrated solution. This product can be stored at 2-8°C for 12 months. Please protected from prolonged exposure to light and do not freeze.
<b>Shipping</b>	Ice bag

### Antigen Information

<b>Alternate Names</b>	DRA/DRB1;HLA class II histocompatibility antigen DR alpha/ DRB1-15 beta chain;HLA-DRA1/DRB1;MHC class II antigen DRA
------------------------	--

### For Research Use Only

<b>Uniprot ID</b>	P01903;P01911
<b>Gene ID</b>	3122,3123
<b>Background</b>	HLA-DR is a heterodimeric cell surface glycoprotein comprised of a 36 kD $\alpha$ (heavy) chain and a 27 kD $\beta$ (light) chain. It is expressed on B cells, activated T cells, monocytes/macrophages, dendritic cells, and other non-professional APCs. In conjunction with the CD3/TCR complex and CD4 molecules, HLA-DR is critical for efficient peptide presentation to CD4+ T cells.

## For Research Use Only