

GMFG Polyclonal Antibody

catalog number: E-AB-10913

Note: Centrifuge before opening to ensure complete recovery of vial contents.

Description

Reactivity	Human;Mouse;Rat
Immunogen	Recombinant protein of human GMFG
Host	Rabbit
Isotype	IgG
Purification	Affinity purification
Conjugation	Unconjugated
Buffer	Phosphate buffered solution, pH 7.4, containing 0.05% stabilizer and 50% glycerol.

Applications

Recommended Dilution

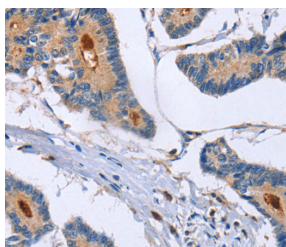
WB	1:500-1:2000
IHC	1:50-1:200

Data

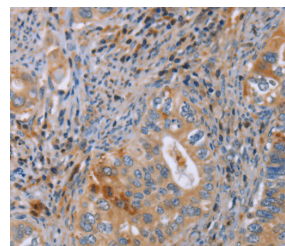


Western Blot analysis of Mouse heart and Human fetal brain tissue using GMFG Polyclonal Antibody at dilution of 1:1142

Calculated-MV:17 kDa



Immunohistochemistry of paraffin-embedded Human colon cancer using GMFG Polyclonal Antibody at dilution of 1:50



Immunohistochemistry of paraffin-embedded Human cervical cancer using GMFG Polyclonal Antibody at dilution of 1:50

Preparation & Storage

Storage	Store at -20°C Valid for 12 months. Avoid freeze / thaw cycles.
Shipping	The product is shipped with ice pack, upon receipt, store it immediately at the temperature recommended.

Background

For Research Use Only

Glia maturation factor, gamma, also known as GMFG, is a 142 amino acid protein that belongs to the GMF subfamily of the larger actin-binding protein ADF family. GMF-gamma is expressed predominantly in lung, heart and placenta. GMF-gamma is considered a candidate regulatory growth factor protein, mediating both paracrine and autocrine cell-cell interactions. GMF-gamma is phosphorylated at N-terminal serine, and its phosphorylation is enhanced by coexpression of dominant active Rac 1 and Cdc42. GMF-gamma expression is significantly increased in a cardiac ischemia/reperfusion model where inflammation and angiogenesis take place actively. As a regulator of actin-based cellular functions, GMF-gamma may provide a novel approach to modulate the pathophysiology of cardiovascular diseases. GMF-gamma is primarily found in proliferative and differentiative organs.