

PSAP Polyclonal Antibody

catalog number: AN006050L

Note: Centrifuge before opening to ensure complete recovery of vial contents.

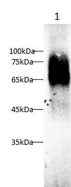
Description

Reactivity	Human;Mouse;Rat
Immunogen	Recombinant Human PSAP protein expressed by Mammalian
Host	Rabbit
Isotype	IgG
Purification	Antigen Affinity Purification
Buffer	PBS with 0.05% Proclin300, 1% protective protein and 50% glycerol, pH7.4

Applications

Applications	Recommended Dilution
WB	1:1000-1:2000
IHC	1:500-1:1000

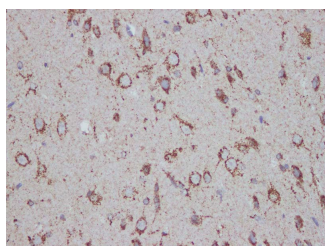
Data



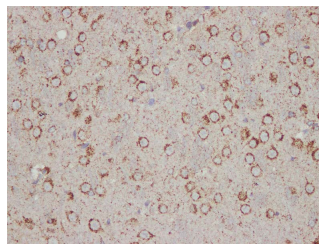
Western blot with Anti PSAP Polyclonal antibody at dilution of 1:3000. Lane 1: A431 cell lysate.

Observed-MW:60-80 kDa

Calculated-MW:58 kDa



Immunohistochemistry of paraffin-embedded Rat brain using PSAP Polyclonal Antibody at dilution of 1:1200.



Immunohistochemistry of paraffin-embedded Mouse brain using PSAP Polyclonal Antibody at dilution of 1:1200.

Preparation & Storage

Storage	Store at -20°C Valid for 12 months. Avoid freeze / thaw cycles.
Shipping	The product is shipped with ice pack, upon receipt, store it immediately at the temperature recommended.

Background

For Research Use Only

Prosaposin behaves as a myelinotrophic and neurotrophic factor, whose effects are mediated by its G-protein-coupled receptors, GPR37 and GPR37L1, undergoing ligand-mediated internalization followed by ERK phosphorylation signaling. By similarity Saposins are specific low-molecular mass non-enzymic proteins and participate in the lysosomal degradation of sphingolipids, which takes place by the sequential action of specific hydrolases. The Prosaposin gets cleaved into 5 chains, Saposin A, B, B-Val, C and D. It also contains several disulfide bonds as well as glycosylation sites.