

## Recombinant Human GHRL protein(His Tag)

**Catalog Number:** PDEH100756

**Note:** Centrifuge before opening to ensure complete recovery of vial contents.

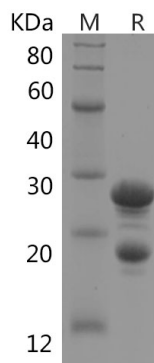
### Description

<b>Species</b>	Human
<b>Source</b>	E.coli-derived Human GHRL protein Gly24-Leu98, with an N-terminal His & Sumo
<b>Mol_Mass</b>	19.3 kDa
<b>Accession</b>	Q9UBU3
<b>Bio-activity</b>	Not validated for activity

### Properties

<b>Purity</b>	> 85% as determined by reducing SDS-PAGE.
<b>Endotoxin</b>	< 10 EU/mg of the protein as determined by the LAL method
<b>Storage</b>	Generally, lyophilized proteins are stable for up to 12 months when stored at -20 to -80 °C. Reconstituted protein solution can be stored at 4-8°C for 2-7 days. Aliquots of reconstituted samples are stable at < -20°C for 3 months.
<b>Shipping</b>	This product is provided as lyophilized powder which is shipped with ice packs.
<b>Formulation</b>	Lyophilized from a 0.2 µm filtered solution in PBS with 5% Trehalose and 5% Mannitol.
<b>Reconstitution</b>	It is recommended that sterile water be added to the vial to prepare a stock solution of 0.5 mg/mL. Concentration is measured by UV-Vis.

### Data



> 85 % as determined by reducing SDS-PAGE.

### Background

Ghrelin is the ligand for growth hormone secretagogue receptor type 1 (GHSR).Induces the release of growth hormone from the pituitary.Has an appetite-stimulating effect, induces adiposity and stimulates gastric acid secretion. Involved in growth regulation.

### For Research Use Only