

Recombinant Mouse IL2Ra/CD25 Protein (His Tag)

Catalog Number: PKSM040753

Note: Centrifuge before opening to ensure complete recovery of vial contents.

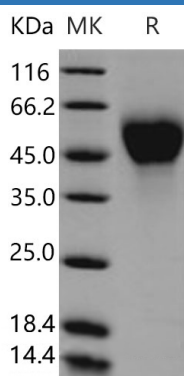
Description

Species	Mouse
Source	HEK293 Cells-derived Mouse IL2Ra/CD25 protein Met 1-Lys 236, with an C-terminal His
Calculated MW	26 kDa
Accession	NP_032393.3
Bio-activity	Not validated for activity

Properties

Purity	> 98 % as determined by reducing SDS-PAGE.
Endotoxin	< 1.0 EU per µg of the protein as determined by the LAL method.
Storage	Generally, lyophilized proteins are stable for up to 12 months when stored at -20 to -80°C. Reconstituted protein solution can be stored at 4-8°C for 2-7 days. Aliquots of reconstituted samples are stable at < -20°C for 3 months.
Shipping	This product is provided as lyophilized powder which is shipped with ice packs.
Formulation	Lyophilized from sterile PBS, pH 7.4 Normally 5% - 8% trehalose, mannitol and 0.01% Tween 80 are added as protectants before lyophilization. Please refer to the specific buffer information in the printed manual.
Reconstitution	Please refer to the printed manual for detailed information.

Data



> 98 % as determined by reducing SDS-PAGE.

Background

For Research Use Only

Toll-free: 1-888-852-8623
Web: www.elabscience.com

Tel: 1-832-243-6086
Email: techsupport@elabscience.com

Fax: 1-832-243-6017

CD25 (alpha-chain of IL-2 receptor, or IL2RA), is a type I transmembrane glycoprotein with a signal peptide, an extracellular region, a transmembrane region, and a cytoplasmic domain. IL2RA is expressed on activated T cells and regulatory T cells, and is capable of binding IL2 with low affinity by itself. However, a ligand-induced high affinity heterotrimeric receptor complex is produced when IL2RA is associated non-covalently with the IL2 receptor beta and gamma chain, and subsequently initiates the intracellular signal pathways such as MAPK or JAK/STAT. On dendritic cells (DC), CD25 has been previously regarded as an activation marker, while both murine and human DC can express CD25, they do not express the beta-chain of the IL-2 receptor, which is indispensable for the execution of IL-2 signaling. The IL2RA (CD25) gene is a substantial component of the high-affinity receptor molecule highly expressed by activated T lymphocytes. Recently, a strong evidence was obtained for the involvement of IL-2RA in conferring susceptibility to type 1 diabetes (T1D). Cancer growth and development is associated with the stimulation of the innate immune system, including enhanced interleukin 2 receptor (IL-2R) expression in immune cells and its shedding into the circulation in a soluble form of sIL-2Ralpha. In most haematological malignancies, including different types of leukaemias and lymphomas, sIL-2Ralpha has been found to be released directly from the surface of neoplastic cells thus reflecting the tumour bulk, turnover and activity.

For Research Use Only

Toll-free: 1-888-852-8623
Web: www.elabscience.com

Tel: 1-832-243-6086
Email: techsupport@elabscience.com

Fax: 1-832-243-6017