

# Recombinant Human LYPLA2 Protein (His Tag)

Catalog Number: PKSH033332



**Note:** Centrifuge before opening to ensure complete recovery of vial contents.

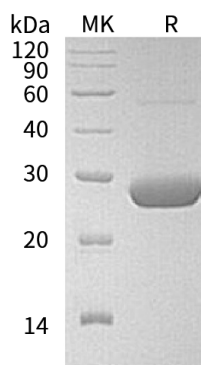
## Description

<b>Species</b>	Human
<b>Mol_Mass</b>	25.8 kDa
<b>Accession</b>	O95372
<b>Bio-activity</b>	Not validated for activity

## Properties

<b>Purity</b>	> 95 % as determined by reducing SDS-PAGE.
<b>Endotoxin</b>	< 1.0 EU per µg of the protein as determined by the LAL method.
<b>Storage</b>	Store at < -20°C, stable for 6 months. Please minimize freeze-thaw cycles.
<b>Shipping</b>	This product is provided as liquid. It is shipped at frozen temperature with blue ice/gel packs. Upon receipt, store it immediately at < -20°C.
<b>Formulation</b>	Supplied as a 0.2 µm filtered solution of 20mM Tris-HCl, 1mM DTT, 100mM NaCl, pH 8.0.
<b>Reconstitution</b>	Not Applicable

## Data



> 95 % as determined by reducing SDS-PAGE.

## Background

Acyl-Protein Thioesterase 2 is a cytoplasmic protein that belongs to the AB Hydrolase 2 family. LYPLA2 is a lysophospholipase and hydrolyzes fatty acids from S-acylated cysteine residues in proteins such as trimeric Gα proteins or HRAS. LYPLA2 has hydrolase activity that converts Palmitoyl-protein to palmitate and protein. LYPLA2 regulates the multifunctional lysophospholipids by acting on biological membranes. LYPLA2 participates in Glycerophospholipid metabolism pathway; fatty acid metabolic process and lipid metabolic process.

## For Research Use Only

A Reliable Research Partner in Life Science and Medicine

Tel: 400-999-2100

Email: [techsupport@elabscience.cn](mailto:techsupport@elabscience.cn)

Web: [www.elabscience.cn](http://www.elabscience.cn)

Rev. V3.2